

For Research Use Only

SLC7A5 Recombinant antibody, PBS Only (Capture/Detector)

Catalog Number: 84178-3-PBS



Basic Information

Catalog Number: 84178-3-PBS	GenBank Accession Number: BC039692	Purification Method: Protein A purification
Size: 1 mg/ml	GeneID (NCBI): 8140	CloneNo.: 241476F2
Source: Rabbit	UNIPROT ID: Q01650	
Isotype: IgG	Full Name: solute carrier family 7 (cationic amino acid transporter, y+ system), member 5	
Immunogen Catalog Number: AG29164	Calculated MW: 507 aa, 55 kDa	

Applications

Tested Applications:
Cytometric bead array, Indirect ELISA

Species Specificity:
human

Background Information

Storage

Storage:
Store at -80°C.
The product is shipped with ice packs. Upon receipt, store it immediately at -80°C

Storage Buffer:
PBS Only

For technical support and original validation data for this product please contact:

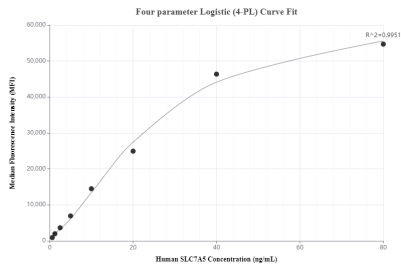
T: 4006900926

E: Proteintech-CN@ptglab.com

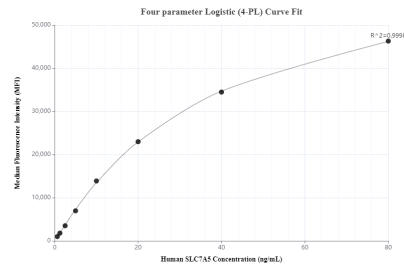
W: ptgcn.com

This product is exclusively available under Proteintech Group brand and is not available to purchase from any other manufacturer.

Selected Validation Data



Cytometric bead array standard curve of MP01094-1, SLC7A5 Recombinant Matched Antibody Pair, PBS Only. Capture antibody: 84178-1-PBS. Detection antibody: 84178-3-PBS. Standard: Ag29164. Range: 0.625-80 ng/mL



Cytometric bead array standard curve of MP01094-3, SLC7A5 Recombinant Matched Antibody Pair, PBS Only. Capture antibody: 84178-3-PBS. Detection antibody: 84178-2-PBS. Standard: Ag29164. Range: 0.625-80 ng/mL