

For Research Use Only

# Neprilysin/CD10 Recombinant antibody, PBS Only (Detector)

Catalog Number: 84181-1-PBS



## Basic Information

<b>Catalog Number:</b> 84181-1-PBS	<b>GenBank Accession Number:</b> BC101658	<b>Purification Method:</b> Protein A purification
<b>Size:</b> 1 mg/ml	<b>GeneID (NCBI):</b> 4311	<b>CloneNo.:</b> 241322A8
<b>Source:</b> Rabbit	<b>UNIPROT ID:</b> P08473	
<b>Isotype:</b> IgG	<b>Full Name:</b> membrane metallo-endoropeptidase	
	<b>Calculated MW:</b> 750 aa, 86 kDa	
	<b>Observed MW:</b> 100 kDa	

## Applications

**Tested Applications:**  
WB, IHC, IF-P, Cytometric bead array, Indirect ELISA

**Species Specificity:**  
human, mouse, rat

## Background Information

CD10, also known as neprilysin, membrane metallo-endoropeptidase (MME), neutral endopeptidase (NEP), or common acute lymphoblastic leukemia antigen (CALLA), is a 100-kDa type II transmembrane glycoprotein belonging to peptidase M13 family (PMID: 7760013; 8102558). Among hematopoietic cells, CD10 is expressed on granulocytes, B cell precursors, mature germinal center B cells, a subset of immature thymocytes (PMID: 13679451). CD10 is also expressed on a variety of nonhematopoietic cell types, including bronchial epithelial cells, cultured fibroblasts, bone marrow stromal cells, renal proximal tubular epithelial cells, breast myoepithelium, biliary canaliculi (PMID: 8102558). CD10 is a cell surface peptidase that cleaves peptide bonds on the amino side of hydrophobic amino acids and inactivates a variety of physiologically active peptides. Loss or decreases in CD10 expression have been reported in a variety of malignancies (PMID: 16054017).

## Storage

**Storage:**  
Store at -80°C.  
**The product is shipped with ice packs. Upon receipt, store it immediately at -80°C**

**Storage Buffer:**  
PBS Only

For technical support and original validation data for this product please contact:

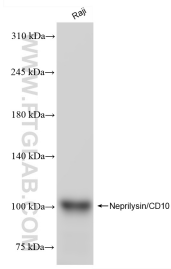
T: 4006900926

E: [Proteintech-CN@ptglab.com](mailto:Proteintech-CN@ptglab.com)

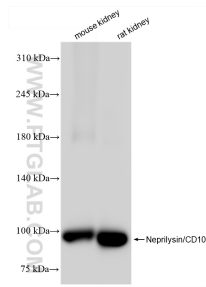
W: [ptgcn.com](http://ptgcn.com)

**This product is exclusively available under Proteintech Group brand and is not available to purchase from any other manufacturer.**

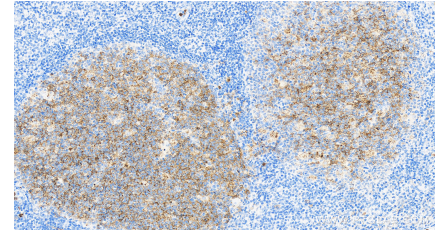
## Selected Validation Data



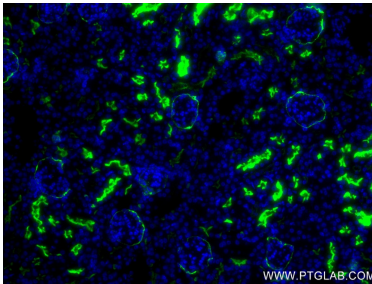
Raji cells were subjected to SDS PAGE followed by western blot with 84181-1-RR (Nephrilysin/CD10 antibody) at dilution of 1:10000 incubated at room temperature for 1.5 hours. This data was developed using the same antibody clone with 84181-1-PBS in a different storage buffer formulation.



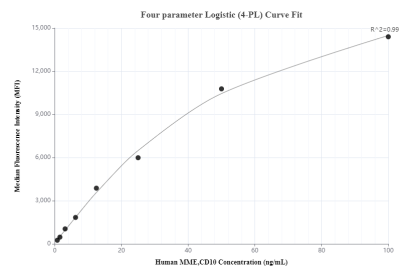
Various lysates were subjected to SDS PAGE followed by western blot with 84181-1-RR (Nephrilysin/CD10 antibody) at dilution of 1:10000 incubated at room temperature for 1.5 hours. This data was developed using the same antibody clone with 84181-1-PBS in a different storage buffer formulation.



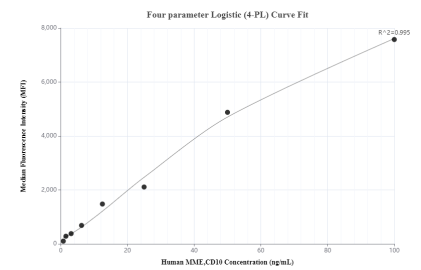
Immunohistochemical analysis of paraffin-embedded human tonsillitis tissue slide using 84181-1-RR (Nephrilysin/CD10 antibody) at dilution of 1:1000 (under 40x lens). Heat mediated antigen retrieval with Tris-EDTA buffer (pH 9.0). This data was developed using the same antibody clone with 84181-1-PBS in a different storage buffer formulation.



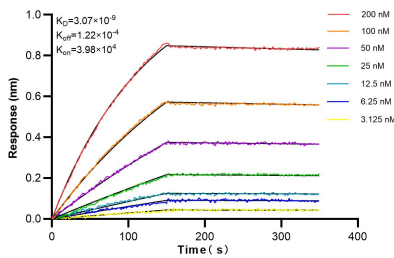
Immunofluorescent analysis of (4% PFA) fixed mouse kidney tissue using Nephrilysin/CD10 antibody (84181-1-RR, Clone: 241322A8) at dilution of 1:400 and Coralite®488-Conjugated Goat Anti-Rabbit IgG(H+L) (SA00013-2). This data was developed using the same antibody clone with 84181-1-PBS in a different storage buffer formulation.



Cytometric bead array standard curve of MP01076-1, MME,CD10 Recombinant Matched Antibody Pair, PBS Only. Capture antibody: 84181-3-PBS. Detection antibody: 84181-1-PBS. Standard: RP02332. Range: 0.781-100 ng/mL.



Cytometric bead array standard curve of MP01076-3, MME,CD10 Recombinant Matched Antibody Pair, PBS Only. Capture antibody: 84181-2-PBS. Detection antibody: 84181-1-PBS. Standard: RP02332. Range: 0.781-100 ng/mL.



Biolayer interferometry (BLI) kinetic assays of 84181-1-RR against Human Nephrilysin/CD10 were performed. The affinity constant is 3.07 nM.