

For Research Use Only

# HER2/ErbB2 Recombinant antibody, PBS Only (Capture/Detector)

Catalog Number:84182-3-PBS



## Basic Information

<b>Catalog Number:</b> 84182-3-PBS	<b>GenBank Accession Number:</b> BC156755	<b>Purification Method:</b> Protein A purification
<b>Size:</b> 1 mg/ml	<b>GeneID (NCBI):</b> 2064	<b>CloneNo.:</b> 241409H4
<b>Source:</b> Rabbit	<b>UNIPROT ID:</b> P04626	
<b>Isotype:</b> IgG	<b>Full Name:</b> v-erb-b2 erythroblastic leukemia viral oncogene homolog 2, neuro/glioblastoma derived oncogene homolog (avian)	
	<b>Calculated MW:</b> 1255 aa, 138 kDa	

## Applications

**Tested Applications:**  
Cytometric bead array, Sandwich ELISA, Indirect ELISA,  
Sample test

**Species Specificity:**  
human

## Background Information

### Storage

**Storage:**  
Store at -80°C.  
**The product is shipped with ice packs. Upon receipt, store it immediately at -80°C**

**Storage Buffer:**  
PBS Only

For technical support and original validation data for this product please contact:

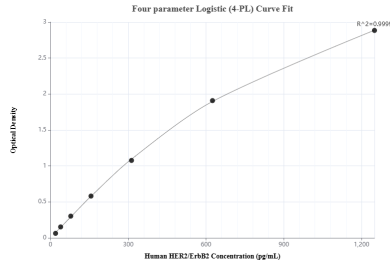
T: 4006900926

E: [Proteintech-CN@ptglab.com](mailto:Proteintech-CN@ptglab.com)

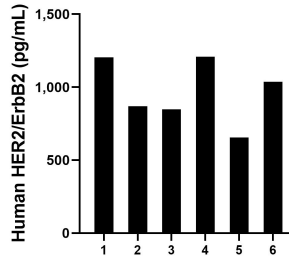
W: [ptgcn.com](http://ptgcn.com)

**This product is exclusively available under Proteintech Group brand and is not available to purchase from any other manufacturer.**

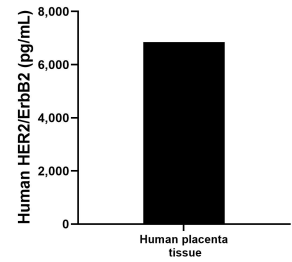
## Selected Validation Data



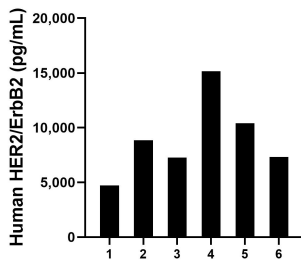
Sandwich ELISA standard curve of MP01080-1, Human HER2/ErbB2 Recombinant Matched Antibody Pair - PBS only. 84182-2-PBS was coated to a plate as the capture antibody and incubated with serial dilutions of standard RP02350. 84182-3-PBS was HRP conjugated as the detection antibody. Range: 19.5-1250 pg/mL



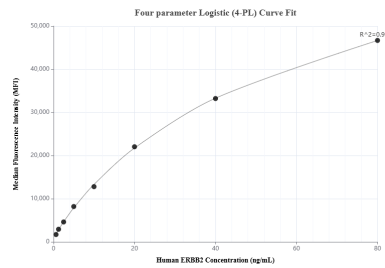
Human milk of six individual healthy human donors was measured. The human HER2/ErbB2 concentration of detected samples was determined to be 969.9 pg/mL with a range of 654.3 - 1,208.0 pg/mL



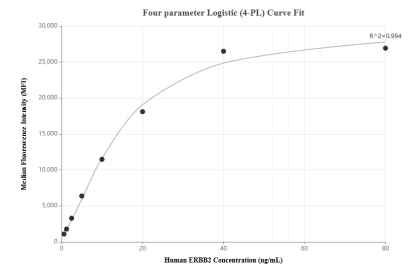
The mean HER2/ErbB2 concentration was determined to be 6,844.8 pg/mL in human placenta tissue extract based on a 2.9 mg/mL extract load.



Serum of six individual healthy human donors was measured. The human HER2/ErbB2 concentration of detected samples was determined to be 8,952.9 pg/mL with a range of 4,726.1 - 15,157.7 pg/mL



Cytometric bead array standard curve of MP01080-1, HER2/ERBB2 Recombinant Matched Antibody Pair, PBS Only. Capture antibody: 84182-2-PBS. Detection antibody: 84182-3-PBS. Standard: RP02350. Range: 0.625-80 ng/mL



Cytometric bead array standard curve of MP01080-3, ERBB2 Recombinant Matched Antibody Pair, PBS Only. Capture antibody: 84182-3-PBS. Detection antibody: 84182-1-PBS. Standard: RP02350. Range: 0.625-80 ng/mL