

For Research Use Only

# MED6 Recombinant antibody, PBS Only

Catalog Number: 84184-5-PBS



## Basic Information

<b>Catalog Number:</b> 84184-5-PBS	<b>GenBank Accession Number:</b> BC004106	<b>Purification Method:</b> Protein A purification
<b>Size:</b> 1 mg/ml	<b>GeneID (NCBI):</b> 10001	<b>CloneNo.:</b> 241382B2
<b>Source:</b> Rabbit	<b>UNIPROT ID:</b> O75586	
<b>Isotype:</b> IgG	<b>Full Name:</b> mediator complex subunit 6	
<b>Immunogen Catalog Number:</b> AG7541	<b>Calculated MW:</b> 28 kDa	

## Applications

**Tested Applications:**  
IF/ICC, Indirect ELISA

**Species Specificity:**  
human

## Background Information

MED6 is a part of mediator complex. Mediator functions as a bridge to convey information from gene-specific regulatory proteins to the basal RNA polymerase II transcription machinery. Mediator is recruited to promoters by direct interactions with regulatory proteins and serves as a scaffold for the assembly of a functional preinitiation complex with RNA polymerase II and the general transcription factors.

## Storage

**Storage:**  
Store at -80°C.  
**The product is shipped with ice packs. Upon receipt, store it immediately at -80°C**

**Storage Buffer:**  
PBS Only

For technical support and original validation data for this product please contact:

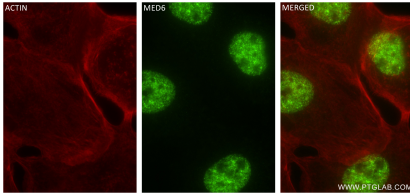
T: 4006900926

E: Proteintech-CN@ptglab.com

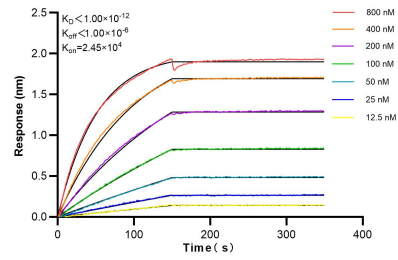
W: ptgcn.com

**This product is exclusively available under Proteintech Group brand and is not available to purchase from any other manufacturer.**

## Selected Validation Data



Immunofluorescent analysis of (4% PFA) fixed A431 cells using MED6 antibody (84184-5-RR, Clone: 241382B2 ) at dilution of 1:400 and CoraLite®488-Conjugated Goat Anti-Rabbit IgG(H+L) (SA00013-2), CL594-Phalloidin (red). This data was developed using the same antibody clone with 84184-5-PBS in a different storage buffer formulation.



Biolayer interferometry (BLI) kinetic assays of 84184-5-RR against Human MED6 were performed. The affinity constant is below 1 pM.