

For Research Use Only

# BST2 Recombinant antibody, PBS Only (Capture/Detector)

Catalog Number: 84190-5-PBS



## Basic Information

<b>Catalog Number:</b> 84190-5-PBS	<b>GenBank Accession Number:</b> BC033873	<b>Purification Method:</b> Protein A purification
<b>Size:</b> 1 mg/ml	<b>GeneID (NCBI):</b> 684	<b>CloneNo.:</b> 241513F10
<b>Source:</b> Rabbit	<b>UNIPROT ID:</b> Q10589	
<b>Isotype:</b> IgG	<b>Full Name:</b> bone marrow stromal cell antigen 2	
	<b>Calculated MW:</b> 180 aa, 20 kDa	

## Applications

**Tested Applications:**  
Cytometric bead array, Sandwich ELISA, Indirect ELISA,  
Sample test

**Species Specificity:**  
human

## Background Information

### Storage

**Storage:**  
Store at -80°C.  
**The product is shipped with ice packs. Upon receipt, store it immediately at -80°C**

**Storage Buffer:**  
PBS Only

For technical support and original validation data for this product please contact:

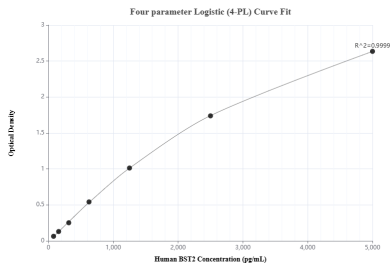
T: 4006900926

E: [Proteintech-CN@ptglab.com](mailto:Proteintech-CN@ptglab.com)

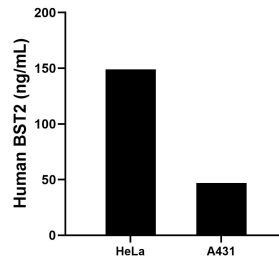
W: [ptgcn.com](http://ptgcn.com)

**This product is exclusively available under Proteintech Group brand and is not available to purchase from any other manufacturer.**

## Selected Validation Data



Sandwich ELISA standard curve of MP01064-4, Human BST2 Recombinant Matched Antibody Pair - PBS only. 84190-5-PBS was coated to a plate as the capture antibody and incubated with serial dilutions of standard Eg1961. 84190-6-PBS was HRP conjugated as the detection antibody. Range: 78.1-5000 pg/mL



The mean BST2 concentration was determined to be 149.00 ng/mL in HeLa cell extract based on a 1.5 mg/mL extract load and 46.91 ng/mL in A431 cell extract based on a 1.5 mg/mL extract load.

