

For Research Use Only

BST2 Recombinant antibody, PBS Only (Detector)

Catalog Number: 84190-6-PBS



Basic Information

Catalog Number: 84190-6-PBS	GenBank Accession Number: BC033873	Purification Method: Protein A purification
Size: 1 mg/ml	GeneID (NCBI): 684	CloneNo.: 241513G11
Source: Rabbit	UNIPROT ID: Q10589	
Isotype: IgG	Full Name: bone marrow stromal cell antigen 2	
	Calculated MW: 180 aa, 20 kDa	

Applications

Tested Applications:
Cytometric bead array, Sandwich ELISA, Indirect ELISA, Sample test

Species Specificity:
human

Background Information

Storage

Storage:
Store at -80°C.
The product is shipped with ice packs. Upon receipt, store it immediately at -80°C

Storage Buffer:
PBS Only

For technical support and original validation data for this product please contact:

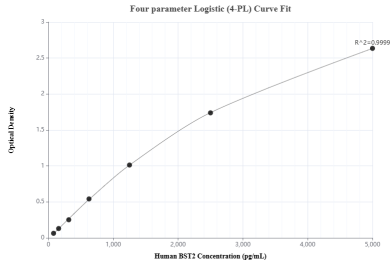
T: 4006900926

E: Proteintech-CN@ptglab.com

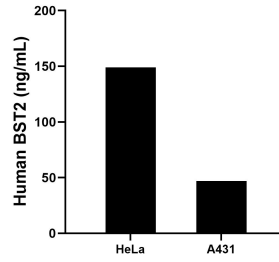
W: ptgcn.com

This product is exclusively available under Proteintech Group brand and is not available to purchase from any other manufacturer.

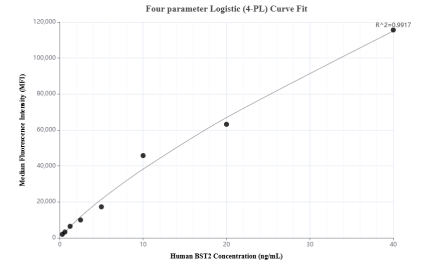
Selected Validation Data



Sandwich ELISA standard curve of MP01064-4, Human BST2 Recombinant Matched Antibody Pair - PBS only. 84190-5-PBS was coated to a plate as the capture antibody and incubated with serial dilutions of standard Eg1961. 84190-6-PBS was HRP conjugated as the detection antibody. Range: 78.1-5000 pg/mL



The mean BST2 concentration was determined to be 149.00 ng/mL in HeLa cell extract based on a 1.5 mg/mL extract load and 46.91 ng/mL in A431 cell extract based on a 1.5 mg/mL extract load.



Cytometric bead array standard curve of MP01064-1, BST2 Recombinant Matched Antibody Pair, PBS Only. Capture antibody: 84190-2-PBS. Detection antibody: 84190-6-PBS. Standard: Eg1961. Range: 0.313-40 ng/mL