

For Research Use Only

# ATAD1 Recombinant antibody

Catalog Number: 84194-6-RR



## Basic Information

Catalog Number:

84194-6-RR

Size:

1000 µg/ml

Source:

Rabbit

Isotype:

IgG

Immunogen Catalog Number:

AG10343

GenBank Accession Number:

BC010868

GeneID (NCBI):

84896

UNIPROT ID:

Q8NBU5

Full Name:

ATPase family, AAA domain containing 1

Calculated MW:

361 aa, 41 kDa

Observed MW:

32-37 kDa

Purification Method:

Protein A purification

CloneNo.:

241449D12

Recommended Dilutions:

WB 1:5000-1:50000

IF/ICC 1:250-1:1000

## Applications

Tested Applications:

WB, IF/ICC, FC (Intra), ELISA

Species Specificity:

human, mouse, rat

Positive Controls:

WB : LNCaP cells, A549 cells, Jurkat cells, HeLa cells, HepG2 cells, mouse brain tissue, rat brain tissue

IF/ICC : HeLa cells,

## Background Information

The mitochondrial AAA (ATPase Associated with diverse cellular Activities) protein ATAD1 (in humans; Msp1 in yeast) removes mislocalized membrane proteins, as well as stuck import substrates from the mitochondrial outer membrane, facilitating their re-insertion into their cognate organelles and maintaining mitochondria's protein import capacity.

## Storage

Storage:

Store at -20°C. Stable for one year after shipment.

Storage Buffer:

PBS with 0.02% sodium azide and 50% glycerol pH 7.3.

Aliquoting is unnecessary for -20°C storage

For technical support and original validation data for this product please contact:

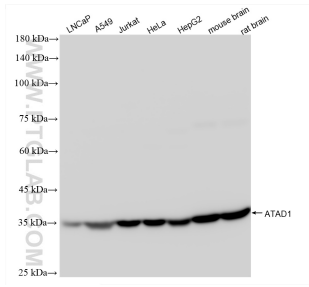
T: 4006900926

E: [Proteintech-CN@ptglab.com](mailto:Proteintech-CN@ptglab.com)

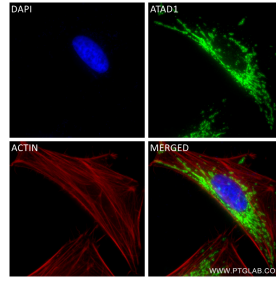
W: [ptgcn.com](http://ptgcn.com)

**This product is exclusively available under Proteintech Group brand and is not available to purchase from any other manufacturer.**

## Selected Validation Data

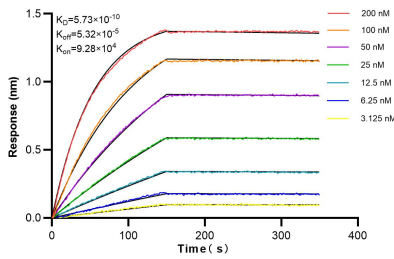


Various lysates were subjected to SDS PAGE followed by western blot with 84194-6-RR (ATAD1 antibody) at dilution of 1:10000 incubated at room temperature for 1.5 hours.



Immunofluorescent analysis of (4% PFA) fixed HeLa cells using ATAD1 antibody (84194-6-RR, Clone: 241449D12) at dilution of 1:500 and CoraLite®488-Conjugated Goat Anti-Rabbit IgG(H+L) (SA00013-2), CL594-Phalloidin (red).

1x10<sup>6</sup> A431 cells were intracellularly stained with 0.25 ug ATAD1 Recombinant antibody (84194-6-RR, Clone:241449D12) and APC-Conjugated Goat Anti-Rabbit IgG(H+L)(red), or 0.25 ug Isotype Control (blue). Cells were fixed with 4% PFA and permeabilized with Flow Cytometry Perm Buffer (PF00011-C).



Biolayer interferometry (BLI) kinetic assays of 84194-6-RR against Human ATAD1 were performed. The affinity constant is 0.573 nM.