

For Research Use Only

CDK6 Recombinant antibody

Catalog Number: 84200-1-RR



Basic Information

Catalog Number: 84200-1-RR	GenBank Accession Number: BC027989	Purification Method: Protein A purification
Size: 1000 µg/ml	GeneID (NCBI): 1021	CloneNo.: 241022F11
Source: Rabbit	UNIPROT ID: Q00534	Recommended Dilutions: WB 1:2000-1:10000
Isotype: IgG	Full Name: cyclin-dependent kinase 6	
Immunogen Catalog Number: AG5600	Calculated MW: 326 aa, 36 kDa	
	Observed MW: 36-40 kDa	

Applications

Tested Applications: WB, ELISA	Positive Controls: WB : Jurkat cells, HepG2 cells, K-562 cells
Species Specificity: human	

Background Information

CDK6(Cyclin-dependent kinase 6) is involved in initiation and maintenance of cell cycle exit during cell differentiation and it prevents cell proliferation and regulates negatively cell differentiation, but is required for the proliferation of specific cell types. The molecular weight of CDK6 is 36-40 kDa (PMID: 23563707, 8114739).

Storage

Storage:
Store at -20°C. Stable for one year after shipment.
Storage Buffer:
PBS with 0.02% sodium azide and 50% glycerol pH 7.3.
Aliquoting is unnecessary for -20°C storage

For technical support and original validation data for this product please contact:

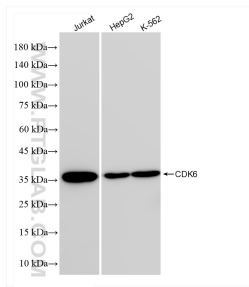
T: 4006900926

E: Proteintech-CN@ptglab.com

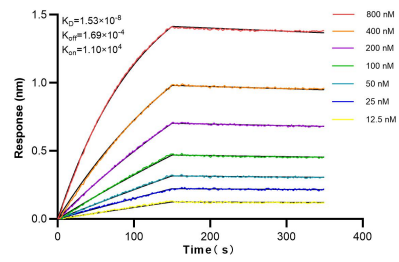
W: ptgcn.com

This product is exclusively available under Proteintech Group brand and is not available to purchase from any other manufacturer.

Selected Validation Data



Various lysates were subjected to SDS PAGE followed by western blot with 84200-1-RR (CDK6 antibody) at dilution of 1:5000 incubated at room temperature for 1.5 hours.



Biolayer interferometry (BLI) kinetic assays of 84200-1-RR against Human CDK6 were performed. The affinity constant is 15.3 nM.