

For Research Use Only

# CD90/Thy1 Recombinant antibody

Catalog Number: 84206-3-RR



## Basic Information

<b>Catalog Number:</b> 84206-3-RR	<b>GenBank Accession Number:</b> NM_012673.2	<b>Purification Method:</b> Protein A purification
<b>Size:</b> 1000 ug/ml	<b>GeneID (NCBI):</b> 24832	<b>CloneNo.:</b> 241388E2
<b>Source:</b> Rabbit	<b>UNIPROT ID:</b> P01830	<b>Recommended Dilutions:</b> WB 1:5000-1:50000 IF/ICC 1:50-1:500
<b>Isotype:</b> IgG	<b>Full Name:</b> Thy-1 cell surface antigen	
	<b>Calculated MW:</b> 18 kDa	
	<b>Observed MW:</b> 25 kDa	

## Applications

<b>Tested Applications:</b> WB, IF/ICC, ELISA	<b>Positive Controls:</b>
<b>Species Specificity:</b> rat	WB : PC-12 cells, rat brain tissue IF/ICC : PC-12 cells,

## Background Information

CD90, also known as THY1, is a 25-35 kD protein that is expressed on 1-4% of human fetal liver cells, cord blood cells, and bone marrow cells. CD90 is one of the essential surface molecules expressed on human MSC from bone marrow and other sources. Activation of Thy-1 has been reported to promote T cell activation. It also affects numerous nonimmunologic biological processes, including cellular adhesion, neurite outgrowth, tumor growth, migration, and cell death.

## Storage

**Storage:**  
Store at -20°C. Stable for one year after shipment.  
**Storage Buffer:**  
PBS with 0.02% sodium azide and 50% glycerol pH 7.3.  
Aliquoting is unnecessary for -20°C storage

For technical support and original validation data for this product please contact:

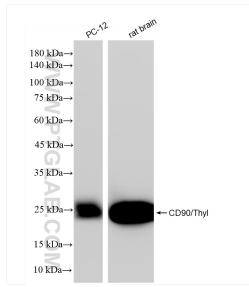
T: 4006900926

E: Proteintech-CN@ptglab.com

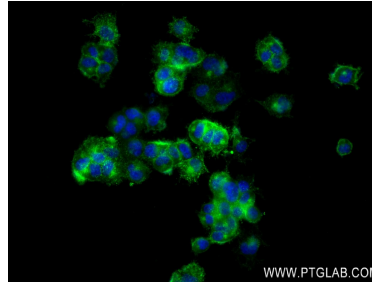
W: ptgcn.com

This product is exclusively available under Proteintech Group brand and is not available to purchase from any other manufacturer.

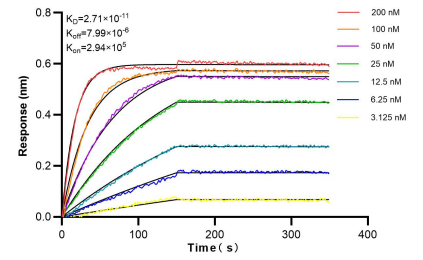
## Selected Validation Data



Various lysates were subjected to SDS PAGE followed by western blot with 84206-3-RR (CD90/Thy1 antibody) at dilution of 1:10000 incubated at room temperature for 1.5 hours.



Immunofluorescent analysis of (4% PFA) fixed PC-12 cells using CD90/Thy1 antibody (84206-3-RR, Clone: 241388E2) at dilution of 1:200 and CoraLite®488-Conjugated Goat Anti-Rabbit IgG(H+L) (SA00013-2).



Biolayer interferometry (BLI) kinetic assays of 84206-3-RR against Rat CD90/Thy1 were performed. The affinity constant is 27.1 pM.