

For Research Use Only

# METTL6 Recombinant antibody

Catalog Number:84209-4-RR



## Basic Information

<b>Catalog Number:</b> 84209-4-RR	<b>GenBank Accession Number:</b> BC022400	<b>Purification Method:</b> Protein A purification
<b>Size:</b> 1000 ug/ml	<b>GeneID (NCBI):</b> 131965	<b>CloneNo.:</b> 241482F12
<b>Source:</b> Rabbit	<b>UNIPROT ID:</b> Q8TCB7	<b>Recommended Dilutions:</b> WB 1:5000-1:50000
<b>Isotype:</b> IgG	<b>Full Name:</b> methyltransferase like 6	
<b>Immunogen Catalog Number:</b> AG9714	<b>Calculated MW:</b> 255 aa, 30 kDa	
	<b>Observed MW:</b> 30-32 kDa	

## Applications

<b>Tested Applications:</b> WB, ELISA	<b>Positive Controls:</b> WB : HeLa cells, HepG2 cells, LNCaP cells, HEK-293 cells, Jurkat cells, K-562 cells
<b>Species Specificity:</b> human	

## Background Information

Methyltransferase-like protein 6 (METTL6) belongs to the METL family. METTL6 is as a crucial regulator of tumor cell growth, and METTL6 is a bona fide transfer RNA (tRNA) methyltransferase, catalyzing the formation of 3-methylcytidine at C32 of specific serine tRNA isoacceptors (PMID:32923617). METTL6 is a member of the RNA methyltransferase family that has been identified in many cancers. The mRNA expression levels of METTL6 were significantly upregulated in HCC tumor tissues compared to that in adjacent non-tumor tissues. CRISPR/Cas9 mediated knockout of METTL6 in hepatocellular carcinoma cell lines remarkably inhibited colony formation, cell proliferation, cell migration, cell invasion and cell attachment ability (PMID:34913069).

## Storage

**Storage:**  
Store at -20°C. Stable for one year after shipment.  
**Storage Buffer:**  
PBS with 0.02% sodium azide and 50% glycerol pH 7.3.  
Aliquoting is unnecessary for -20°C storage

For technical support and original validation data for this product please contact:

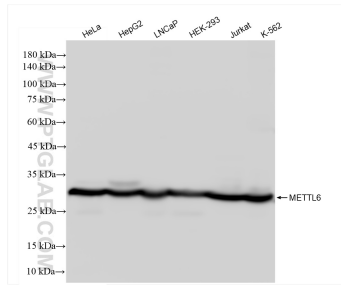
T: 4006900926

E: Proteintech-CN@ptglab.com

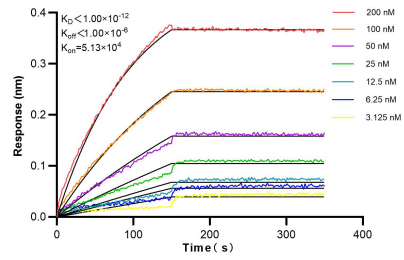
W: ptgcn.com

This product is exclusively available under Proteintech Group brand and is not available to purchase from any other manufacturer.

## Selected Validation Data



Various lysates were subjected to SDS PAGE followed by western blot with 84209-4-RR (METTL6 antibody) at dilution of 1:10000 incubated at room temperature for 1.5 hours.



Biolayer interferometry (BLI) kinetic assays of 84209-4-RR against Human METTL6 were performed. The affinity constant is below 1 pM.