

For Research Use Only

# CD23/Fc epsilon RII Recombinant antibody

Catalog Number: 84212-3-RR



## Basic Information

Catalog Number:

84212-3-RR

Size:

1000 µg/ml

Source:

Rabbit

Isotype:

IgG

GenBank Accession Number:

EDL21948.1

GeneID (NCBI):

14128

UNIPROT ID:

P20693-1

Full Name:

Fc receptor, IgE, low affinity II, alpha polypeptide

Calculated MW:

38kDa

Observed MW:

46 kDa

Purification Method:

Protein A purification

CloneNo.:

241385C9

Recommended Dilutions:

WB 1:2000-1:10000

## Applications

Tested Applications:

WB, ELISA

Species Specificity:

mouse

Positive Controls:

WB : mouse spleen tissue,

## Background Information

CD23/Fc ε RII) is a low-affinity receptor for immunoglobulin E (IgE) and CR2/CD21, involved in B cell differentiation and IgE regulation. Two forms of Fc ε RII (Fc ε RIIa and Fc ε RIIb) were found to exist, which differ in structure only in the N-terminal cytoplasmic region, and Fc ε RIIa and Fc ε RIIb play roles in effector cells of B-cell and IgE-mediated immunity, respectively. On B cells, initiates IgE-dependent antigen uptake and presentation to T cells. On macrophages, after IgE binding and antigen cross-linking, intracellular killing of parasites is induced by activation of the L-arginine-nitric oxide pathway.

## Storage

Storage:

Store at -20°C. Stable for one year after shipment.

Storage Buffer:

PBS with 0.02% sodium azide and 50% glycerol pH 7.3.

Aliquoting is unnecessary for -20°C storage

For technical support and original validation data for this product please contact:

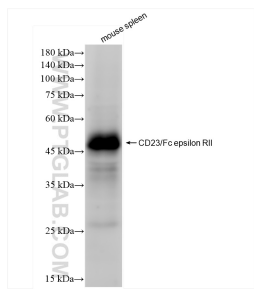
T: 4006900926

E: Proteintech-CN@ptglab.com

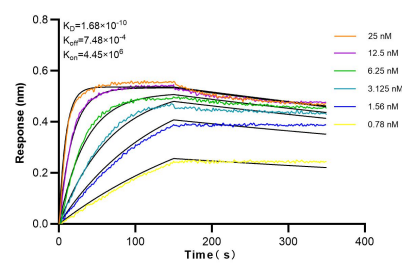
W: ptgcn.com

This product is exclusively available under Proteintech Group brand and is not available to purchase from any other manufacturer.

## Selected Validation Data



mouse spleen tissue were subjected to SDS PAGE followed by western blot with 84212-3-RR (CD23/Fc epsilon RI antibody) at dilution of 1:5000 incubated at room temperature for 1.5 hours.



Biolayer interferometry (BLI) kinetic assays of 84212-3-RR against Mouse CD23/Fc epsilon RI were performed. The affinity constant is 0.168 nM.