

For Research Use Only

# SNX18 Recombinant antibody

Catalog Number: 84215-1-RR



## Basic Information

<b>Catalog Number:</b> 84215-1-RR	<b>GenBank Accession Number:</b> BC060791	<b>Purification Method:</b> Protein A purification
<b>Size:</b> 1000 µg/ml	<b>GeneID (NCBI):</b> 112574	<b>CloneNo.:</b> 241537A2
<b>Source:</b> Rabbit	<b>UNIPROT ID:</b> Q96RF0	<b>Recommended Dilutions:</b> IF/ICC 1:125-1:500
<b>Isotype:</b> IgG	<b>Full Name:</b> sorting nexin 18	
<b>Immunogen Catalog Number:</b> AG16645	<b>Calculated MW:</b> 628 aa, 69 kDa	

## Applications

<b>Tested Applications:</b> IF/ICC, ELISA	<b>Positive Controls:</b> IF/ICC : MCF-7 cells,
<b>Species Specificity:</b> human	

## Background Information

SNXs (sorting nexins) are a diverse group of cytoplasmic and membrane-associated proteins that are classified by the presence of a phospholipid-binding motif-the PX domain (PMID:12461558). SNXs are involved in endocytosis and protein trafficking. SNX18, together with SNX9 and SNX33, constitutes a separate SNX9 subfamily which is required for mitosis through endocytosis processes (PMID: 22718350, 20427313). SNX18 acts as a positive regulator of autophagy and regulates ATG9A trafficking from recycling endosomes (PMID: 24113029, 29437695).

## Storage

**Storage:**  
Store at -20°C. Stable for one year after shipment.  
**Storage Buffer:**  
PBS with 0.02% sodium azide and 50% glycerol pH 7.3.  
Aliquoting is unnecessary for -20°C storage

For technical support and original validation data for this product please contact:

T: 4006900926

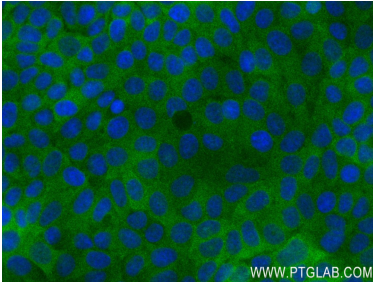
E: [Proteintech-CN@ptglab.com](mailto:Proteintech-CN@ptglab.com)

W: [ptgcn.com](http://ptgcn.com)

This product is exclusively available under Proteintech Group brand and is not available to purchase from any other manufacturer.

---

## Selected Validation Data



Immunofluorescent analysis of (4% PFA) fixed MCF-7 cells using SNX18 antibody (84215-1-RR, Clone: 241537A2 ) at dilution of 1:250 and CoraLite®488-Conjugated Goat Anti-Rabbit IgG(H+L) (SA00013-2).