

For Research Use Only

KLHDC3 Recombinant antibody

Catalog Number: 84217-4-RR



Basic Information

Catalog Number:

84217-4-RR

Size:

1000 µg/ml

Source:

Rabbit

Isotype:

IgG

Immunogen Catalog Number:

AG4879

GenBank Accession Number:

BC041793

GeneID (NCBI):

116138

UNIPROT ID:

Q9BQ90

Full Name:

kelch domain containing 3

Calculated MW:

382 aa, 43 kDa

Observed MW:

43 kDa

Purification Method:

Protein A purification

CloneNo.:

241475G5

Recommended Dilutions:

WB 1:5000-1:50000

Applications

Tested Applications:

WB, FC (Intra), ELISA

Species Specificity:

human, rat

Positive Controls:

WB : NCI-H1299 cells, PC-3 cells, HepG2 cells, K-562 cells, HEK-293T cells, rat testis tissue

Background Information

The Kelch domain-containing protein 3 (KLHDC3), also designated PEAS, contains 5 Kelch repeats and may be involved in meiotic recombination process. The gene encoding KLHDC3 maps to chromosome 6, which contains around 1,200 genes within 170 million base pairs of sequence. Deletion of a portion of the q arm of chromosome 6 is associated with early onset intestinal cancer suggesting the presence of a cancer susceptibility locus. Porphyria cutanea tarda, Parkinson's disease, Stickler syndrome, 21-hydroxylase deficiency and maple syrup urine disease are also associated with genes on chromosome 6. KLHDC3 protein is mainly expressed in cytoplasm, also found in meiotic chromatin.

Storage

Storage:

Store at -20°C. Stable for one year after shipment.

Storage Buffer:

PBS with 0.02% sodium azide and 50% glycerol pH 7.3.

Aliquoting is unnecessary for -20°C storage

For technical support and original validation data for this product please contact:

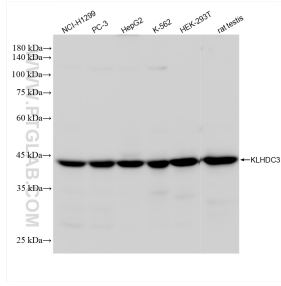
T: 4006900926

E: Proteintech-CN@ptglab.com

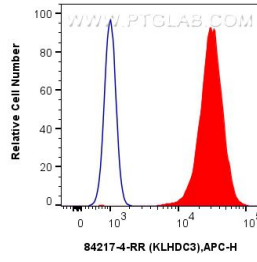
W: ptgcn.com

This product is exclusively available under Proteintech Group brand and is not available to purchase from any other manufacturer.

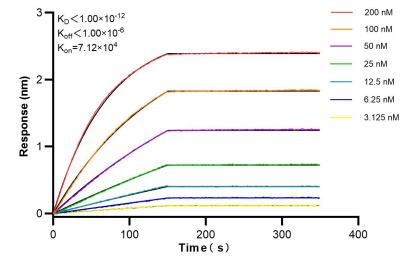
Selected Validation Data



Various lysates were subjected to SDS PAGE followed by western blot with 84217-4-RR (KLHDC3 antibody) at dilution of 1:10000 incubated at room temperature for 1.5 hours.



1×10^6 PC-3 cells were intracellularly stained with 0.25 μ g KLHDC3 Recombinant antibody (84217-4-RR, Clone: 241475G5) and APC-Conjugated Goat Anti-Rabbit IgG(H+L)(red), or 0.25 μ g Rabbit IgG Isotype Control Recombinant Antibody (98136-1-RR, Clone: 240953C9) (blue). Cells were fixed with 4% PFA and permeabilized with Flow Cytometry Perm Buffer (PF00011-C).



Biacore kinetic assays of 84217-4-RR against Human KLHDC3 were performed. The affinity constant is below 1 pM.