

For Research Use Only

FSP1/S100A4 Recombinant antibody, PBS Only (Detector)

Catalog Number: 84221-1-PBS



Basic Information

Catalog Number: 84221-1-PBS	GenBank Accession Number: BC016300	Purification Method: Protein A purification
Size: 1 mg/ml	GeneID (NCBI): 6275	CloneNo.: 241448A12
Source: Rabbit	ENSEMBL Gene ID: ENSG00000196154	
Isotype: IgG	UNIPROT ID: P26447	
Immunogen Catalog Number: AG9019	Full Name: S100 calcium binding protein A4	
	Calculated MW: 101 aa, 12 kDa	
	Observed MW: 10-12 kDa	

Applications

Tested Applications:
WB, IF/ICC, FC (Intra), Cytometric bead array, Indirect ELISA

Species Specificity:
human

Background Information

S100A4 is a member of the S100 family of calcium-binding proteins. The S100 family members have been involved in the regulation of a number of cellular processes such as cell cycle progression and differentiation. S100A4 is known to localize to and function in the nucleus, cytoplasm of cells, and the extracellular space. S100A4 has also been shown to be associated with tumor growth, motility, invasion, metastasis, angiogenesis, apoptosis, and chemoresistance. It is a fibroblast-specific protein associated with mesenchymal cell morphology and motility, is expressed during epithelial-mesenchymal transformations (EMT) in vivo (PMID: 9362334). It is a specific prognostic marker for renal survival in patients with IgAN (PMID: 16105038). It is also an improved marker for lung fibroblasts that could be useful for investigating the pathogenesis of pulmonary fibrosis (PMID: 15618458). Overexpression of S100A4 is correlated with a worse prognosis in patients with various types of cancer.

Storage

Storage:
Store at -80°C.
The product is shipped with ice packs. Upon receipt, store it immediately at -80°C

Storage Buffer:
PBS Only

For technical support and original validation data for this product please contact:

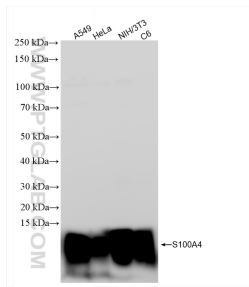
T: 4006900926

E: Proteintech-CN@ptglab.com

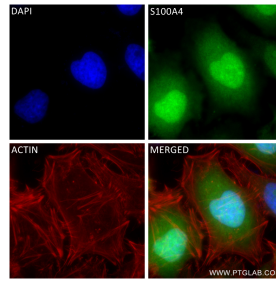
W: ptgcn.com

This product is exclusively available under Proteintech Group brand and is not available to purchase from any other manufacturer.

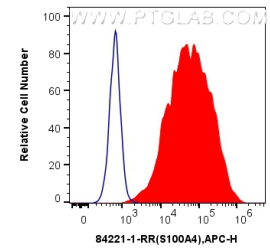
Selected Validation Data



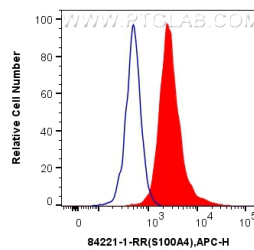
Various lysates were subjected to SDS PAGE followed by western blot with 84221-1-RR (S100A4 antibody) at dilution of 1:10000 incubated at room temperature for 1.5 hours. This data was developed using the same antibody clone with 84221-1-PBS in a different storage buffer formulation.



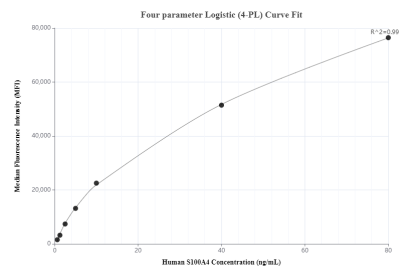
Immunofluorescent analysis of (4% PFA) fixed HeLa cells using S100A4 antibody (84221-1-RR, Clone: 241448A12) at dilution of 1:400 and CoraLite®488-Conjugated Goat Anti-Rabbit IgG(H+L) (SA00013-2), CL594-Phalloidin (red). This data was developed using the same antibody clone with 84221-1-PBS in a different storage buffer formulation.



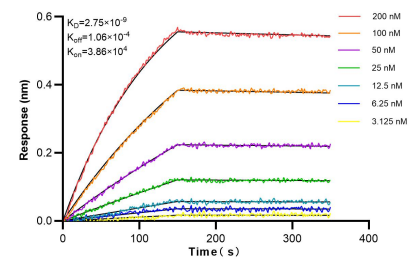
1×10^6 HeLa cells were intracellularly stained with 0.25 ug S100A4 Recombinant antibody (84221-1-RR, Clone:241448A12) and APC-Conjugated Goat Anti-Rabbit IgG(H+L)(red), or 0.25 ug Isotype Control (blue). Cells were fixed with 4% PFA and permeabilized with Flow Cytometry Perm Buffer (PF00011-C). This data was developed using the same antibody clone with 84221-1-PBS in a different storage buffer formulation.



1×10^6 Jurkat cells were intracellularly stained with 0.25 ug S100A4 Recombinant antibody (84221-1-RR, Clone:241448A12) and APC-Conjugated Goat Anti-Rabbit IgG(H+L)(red), or 0.25 ug Isotype Control (blue). Cells were fixed with 4% PFA and permeabilized with Flow Cytometry Perm Buffer (PF00011-C). This data was developed using the same antibody clone with 84221-1-PBS in a different storage buffer formulation.



Cytometric bead array standard curve of MP01155-2, S100A4 Recombinant Matched Antibody Pair, PBS Only. Capture antibody: 84221-2-PBS. Detection antibody: 84221-1-PBS. Standard: Ag9019. Range: 0.625-80 ng/mL.



Biolayer interferometry (BLI) kinetic assays of 84221-1-RR against Human S100A4 were performed. The affinity constant is 2.75 nM.