

For Research Use Only

# CLPS Recombinant antibody, PBS Only (Detector)

Catalog Number: 84224-2-PBS



## Basic Information

<b>Catalog Number:</b> 84224-2-PBS	<b>GenBank Accession Number:</b> BC017897	<b>Purification Method:</b> Protein A purification
<b>Size:</b> 1 mg/ml	<b>GeneID (NCBI):</b> 1208	<b>CloneNo.:</b> 241565H3
<b>Source:</b> Rabbit	<b>UNIPROT ID:</b> P04118	
<b>Isotype:</b> IgG	<b>Full Name:</b> colipase, pancreatic	
<b>Immunogen Catalog Number:</b> AG2321	<b>Calculated MW:</b> 12 kDa	
	<b>Observed MW:</b> 12 kDa	

## Applications

**Tested Applications:**  
WB, IHC, Cytometric bead array, Indirect ELISA

**Species Specificity:**  
human, mouse, rat

## Background Information

Pancreatic colipase is a 12-kDa polypeptide cofactor for pancreatic lipase (EC 3.1.1.3), an enzyme essential for the absorption of dietary long-chain triglyceride fatty acids. Colipase is thought to anchor lipase noncovalently to the surface of lipid micelles, counteracting the destabilizing influence of intestinal bile salts.

## Storage

**Storage:**  
Store at -80°C.  
**The product is shipped with ice packs. Upon receipt, store it immediately at -80°C**

**Storage Buffer:**  
PBS Only

For technical support and original validation data for this product please contact:

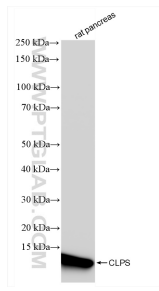
T: 4006900926

E: [Proteintech-CN@ptglab.com](mailto:Proteintech-CN@ptglab.com)

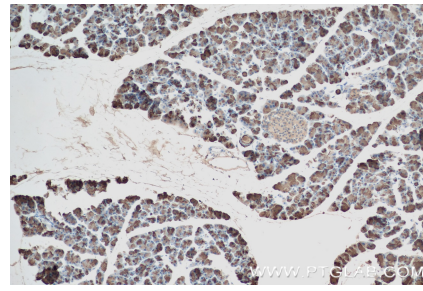
W: [ptgcn.com](http://ptgcn.com)

**This product is exclusively available under Proteintech Group brand and is not available to purchase from any other manufacturer.**

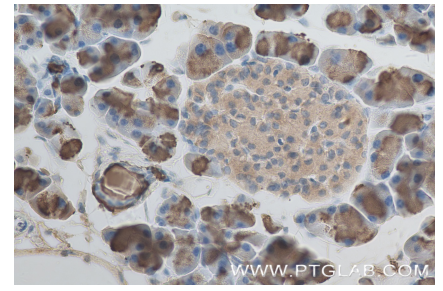
## Selected Validation Data



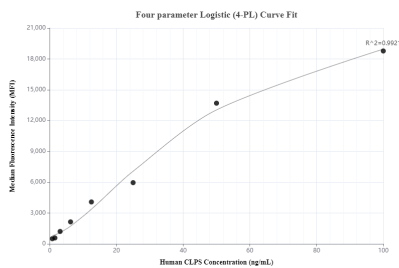
rat pancreas tissue were subjected to SDS PAGE followed by western blot with 84224-2-RR (CLPS antibody) at dilution of 1:10000 incubated at room temperature for 1.5 hours. This data was developed using the same antibody clone with 84224-2-PBS in a different storage buffer formulation.



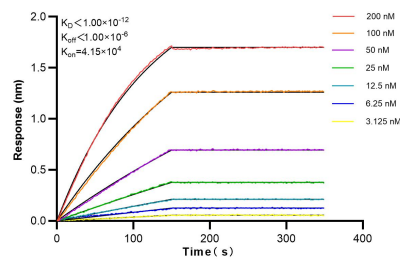
Immunohistochemical analysis of paraffin-embedded mouse pancreas tissue slide using 84224-2-RR (CLPS antibody) at dilution of 1:8000 (under 10x lens). Heat mediated antigen retrieval with Tris-EDTA buffer (pH 9.0). This data was developed using the same antibody clone with 84224-2-PBS in a different storage buffer formulation.



Immunohistochemical analysis of paraffin-embedded mouse pancreas tissue slide using 84224-2-RR (CLPS antibody) at dilution of 1:8000 (under 40x lens). Heat mediated antigen retrieval with Tris-EDTA buffer (pH 9.0). This data was developed using the same antibody clone with 84224-2-PBS in a different storage buffer formulation.



Cytometric bead array standard curve of MP01160-1, CLPS Recombinant Matched Antibody Pair, PBS Only. Capture antibody: 84224-1-PBS. Detection antibody: 84224-2-PBS. Standard: Ag2321. Range: 0.781-100 ng/mL.



Biolayer interferometry (BLI) kinetic assays of 84224-2-RR against Human CLPS were performed. The affinity constant is below 1 pM.