

For Research Use Only

ELL2 Recombinant antibody, PBS Only (Capture/Detector)

Catalog Number: 84226-1-PBS



Basic Information

Catalog Number: 84226-1-PBS	GenBank Accession Number: BC028412	Purification Method: Protein A purification
Size: 1 mg/ml	GeneID (NCBI): 22936	CloneNo.: 241491C7
Source: Rabbit	UNIPROT ID: O00472	
Isotype: IgG	Full Name: elongation factor, RNA polymerase II, 2	
Immunogen Catalog Number: AG3428	Calculated MW: 640 aa, 72 kDa	

Applications

Tested Applications:
Cytometric bead array, Sandwich ELISA, Indirect ELISA,
Sample test

Species Specificity:
human

Background Information

Storage

Storage:
Store at -80°C.
The product is shipped with ice packs. Upon receipt, store it immediately at -80°C

Storage Buffer:
PBS Only

For technical support and original validation data for this product please contact:

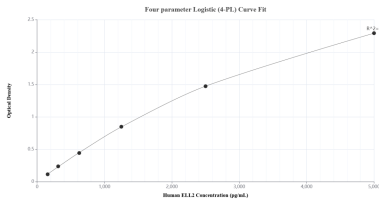
T: 4006900926

E: Proteintech-CN@ptglab.com

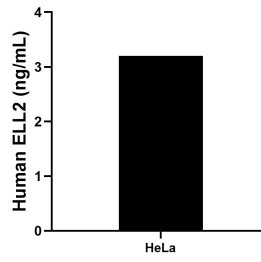
W: ptgcn.com

This product is exclusively available under Proteintech Group brand and is not available to purchase from any other manufacturer.

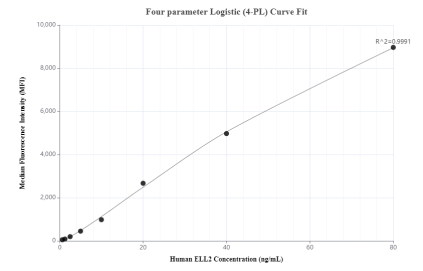
Selected Validation Data



Sandwich ELISA standard curve of MP01114-2, Human ELL2 Recombinant Matched Antibody Pair - PBS only. 84226-3-PBS was coated to a plate as the capture antibody and incubated with serial dilutions of standard Ag3428. 84226-1-PBS was HRP conjugated as the detection antibody. Range: 156-5000 pg/mL.



The mean ELL2 concentration was determined to be 3.2 ng/mL in HeLa cell extract based on a 2.8 mg/mL extract load.



Cytometric bead array standard curve of MP01114-1, ELL2 Recombinant Matched Antibody Pair, PBS Only. Capture antibody: 84226-1-PBS. Detection antibody: 84226-2-PBS. Standard: Ag3428. Range: 0.625-80 ng/mL.