

For Research Use Only

ZC3H13 Recombinant antibody, PBS Only (Detector)

Catalog Number: 84228-2-PBS



Basic Information

Catalog Number: 84228-2-PBS	GenBank Accession Number: NM_001076788	Purification Method: Protein A purification
Size: 1 mg/ml	GeneID (NCBI): 23091	CloneNo.: 241516C5
Source: Rabbit	UNIPROT ID: Q5T200	
Isotype: IgG	Full Name: zinc finger CCCH-type containing 13	
Immunogen Catalog Number: AG28909	Calculated MW: 197 kDa	

Applications

Tested Applications:
Cytometric bead array, Sandwich ELISA, Indirect ELISA, Sample test

Species Specificity:
human

Background Information

Storage

Storage:
Store at -80°C.
The product is shipped with ice packs. Upon receipt, store it immediately at -80°C

Storage Buffer:
PBS Only

For technical support and original validation data for this product please contact:

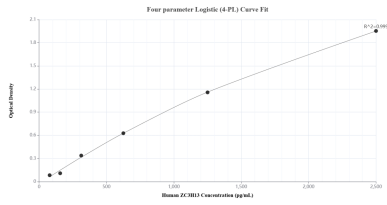
T: 4006900926

E: Proteintech-CN@ptglab.com

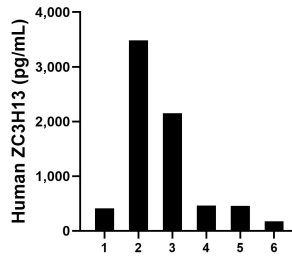
W: ptgcn.com

This product is exclusively available under Proteintech Group brand and is not available to purchase from any other manufacturer.

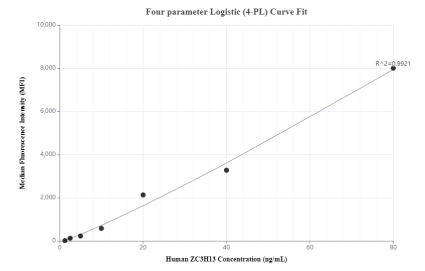
Selected Validation Data



Sandwich ELISA standard curve of MP01121-3, Human ZC3H13 Recombinant Matched Antibody Pair - PBS only. 84228-1-PBS was coated to a plate as the capture antibody and incubated with serial dilutions of standard Ag28909. 84228-2-PBS was HRP conjugated as the detection antibody. Range: 78.1-2500 pg/mL



Serum of six individual healthy human donors was measured. The ZC3H13 concentration of detected samples was determined to be 1,191.0 pg/mL with a range of 175.7-3,486.0 pg/mL.



Cytometric bead array standard curve of MP01121-2, ZC3H13 Recombinant Matched Antibody Pair, PBS Only. Capture antibody: 84228-3-PBS. Detection antibody: 84228-2-PBS. Standard: Ag28909. Range: 1.25-80 ng/mL.