

For Research Use Only

# CD122/IL-2RB Recombinant antibody, PBS Only (Detector)

Catalog Number:84229-1-PBS



## Basic Information

<b>Catalog Number:</b> 84229-1-PBS	<b>GenBank Accession Number:</b> BC025691	<b>Purification Method:</b> Protein A purification
<b>Size:</b> 1 mg/ml	<b>GeneID (NCBI):</b> 3560	<b>CloneNo.:</b> 241408A9
<b>Source:</b> Rabbit	<b>ENSEMBL Gene ID:</b> ENSG00000100385	
<b>Isotype:</b> IgG	<b>UNIPROT ID:</b> P14784	
<b>Immunogen Catalog Number:</b> AG3929	<b>Full Name:</b> interleukin 2 receptor, beta	
	<b>Calculated MW:</b> 551 aa, 61 kDa	

## Applications

**Tested Applications:**  
Cytometric bead array, Sandwich ELISA, Indirect ELISA,  
Sample test

**Species Specificity:**  
human

## Background Information

### Storage

**Storage:**  
Store at -80°C.  
**The product is shipped with ice packs. Upon receipt, store it immediately at -80°C**

**Storage Buffer:**  
PBS Only

For technical support and original validation data for this product please contact:

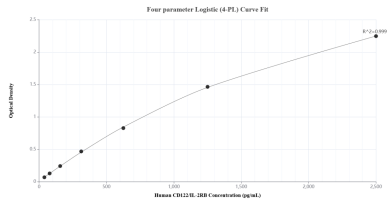
T: 4006900926

E: [Proteintech-CN@ptglab.com](mailto:Proteintech-CN@ptglab.com)

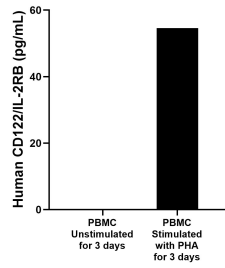
W: [ptgcn.com](http://ptgcn.com)

**This product is exclusively available under Proteintech Group brand and is not available to purchase from any other manufacturer.**

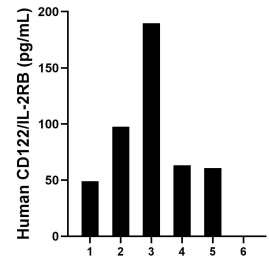
## Selected Validation Data



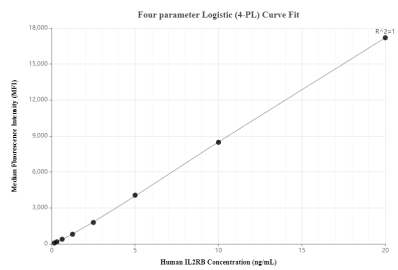
Sandwich ELISA standard curve of MP01123-3, Human CD122/IL-2RB Recombinant Matched Antibody Pair - PBS only. 84229-4-PBS was coated to a plate as the capture antibody and incubated with serial dilutions of standard Ag3929. 84229-1-PBS was HRP conjugated as the detection antibody. Range: 39.1-2500 pg/mL



Human peripheral blood mononuclear cells (PBMC) were cultured unstimulated or stimulated with 10  $\mu$ g/mL PHA for 3 days. The mean CD122/IL-2RB concentration was not determined in unstimulated PBMC supernatant, 54.6 pg/mL in PHA stimulated PBMC supernatant.



Serum of six individual healthy human donors was measured. The CD122/IL-2RB concentration of detected samples was determined to be 92.1 pg/mL with a range of 49.0-189.6 pg/mL



Cytometric bead array standard curve of MP01123-2, CD122/IL2RB Recombinant Matched Antibody Pair, PBS Only. Capture antibody: 84229-3-PBS. Detection antibody: 84229-1-PBS. Standard: Ag3929. Range: 0156-20 ng/mL