

For Research Use Only

# NPEPPS Recombinant antibody

Catalog Number: 84230-5-RR



## Basic Information

<b>Catalog Number:</b> 84230-5-RR	<b>GenBank Accession Number:</b> BC065294	<b>Purification Method:</b> Protein A purification
<b>Size:</b> 1000 µg/ml	<b>GeneID (NCBI):</b> 9520	<b>CloneNo.:</b> 241502G1
<b>Source:</b> Rabbit	<b>UNIPROT ID:</b> P55786	<b>Recommended Dilutions:</b> WB 1:5000-1:50000 IHC 1:50-1:500 IF/ICC 1:125-1:500
<b>Isotype:</b> IgG	<b>Full Name:</b> aminopeptidase puromycin sensitive	
<b>Immunogen Catalog Number:</b> AG36035	<b>Observed MW:</b> 103 kda	

## Applications

**Tested Applications:**  
WB, IHC, IF/ICC, ELISA

**Species Specificity:**  
human, mouse, rat

**Note-IHC: suggested antigen retrieval with TE buffer pH 9.0; (\*) Alternatively, antigen retrieval may be performed with citrate buffer pH 6.0**

**Positive Controls:**

**WB:** A431 cells, HEK-29T cells, MDCK cells, mouse brain tissue, rat brain tissue

**IHC:** mouse liver tissue,

**IF/ICC:** A549 cells,

## Background Information

NPEPPS, also known as PSA, is a member of the oxytocinase subfamily of the M1 aminopeptidase family. NPEPPS encodes puromycin-sensitive aminopeptidase, a zinc metallopeptidase that hydrolyzes amino acids from the N-terminus of its substrate. The protein has 2 isoforms and is located in the cytoplasm.

## Storage

**Storage:**

Store at -20°C. Stable for one year after shipment.

**Storage Buffer:**

PBS with 0.02% sodium azide and 50% glycerol pH 7.3.

Aliquoting is unnecessary for -20°C storage

For technical support and original validation data for this product please contact:

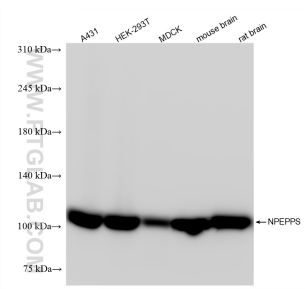
T: 4006900926

E: [Proteintech-CN@ptglab.com](mailto:Proteintech-CN@ptglab.com)

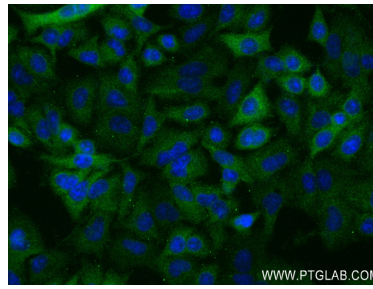
W: [ptgcn.com](http://ptgcn.com)

**This product is exclusively available under Proteintech Group brand and is not available to purchase from any other manufacturer.**

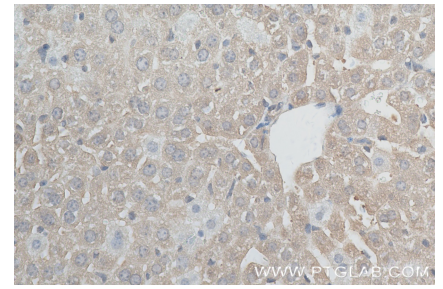
## Selected Validation Data



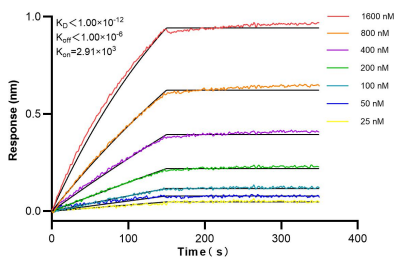
Various lysates were subjected to SDS PAGE followed by western blot with 84230-5-RR (NPEPPS antibody) at dilution of 1:10000 incubated at room temperature for 1.5 hours.



Immunofluorescent analysis of (-20°C Ethanol) fixed A549 cells using NPEPPS antibody (84230-5-RR, Clone: 241502G1) at dilution of 1:250 and CoraLite®488-Conjugated Goat Anti-Rabbit IgG(H+L) (SA00013-2).



Immunohistochemical analysis of paraffin-embedded mouse liver tissue slide using 84230-5-RR (NPEPPS antibody) at dilution of 1:200 (under 40x lens). Heat mediated antigen retrieval with Tris-EDTA buffer (pH 9.0).



Biolayer interferometry (BLI) kinetic assays of 84230-5-RR against Human NPEPPS were performed. The affinity constant is below 1 pM.