

For Research Use Only

# LIF Recombinant antibody, PBS Only (Detector)

Catalog Number: 84232-5-PBS



## Basic Information

Catalog Number:

84232-5-PBS

Size:

1 mg/ml

Source:

Rabbit

Isotype:

IgG

GenBank Accession Number:

BC093733

GeneID (NCBI):

3976

UNIPROT ID:

P15018

Full Name:

leukemia inhibitory factor  
(cholinergic differentiation factor)

Calculated MW:

202 aa, 22 kDa

Purification Method:

Protein A purification

CloneNo.:

241519B8

## Applications

Tested Applications:

Sandwich ELISA, Indirect ELISA, Sample test

Species Specificity:

human

## Background Information

### Storage

Storage:

Store at -80°C.

**The product is shipped with ice packs. Upon receipt, store it immediately at -80°C**

Storage Buffer:

PBS Only

For technical support and original validation data for this product please contact:

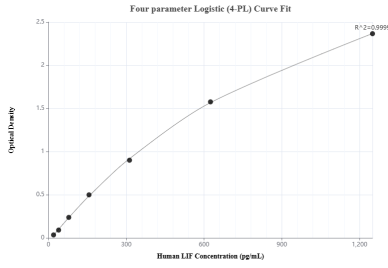
T: 4006900926

E: [Proteintech-CN@ptglab.com](mailto:Proteintech-CN@ptglab.com)

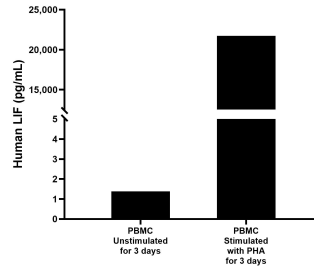
W: [ptgcn.com](http://ptgcn.com)

**This product is exclusively available under Proteintech Group brand and is not available to purchase from any other manufacturer.**

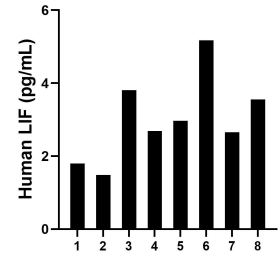
## Selected Validation Data



Sandwich ELISA standard curve of MP01130-4, Human LIF Recombinant Matched Antibody Pair - PBS only. 84232-2-PBS was coated to a plate as the capture antibody and incubated with serial dilutions of standard Eg0111. 84232-5-PBS was HRP conjugated as the detection antibody. Range: 19.5-1250 pg/mL



Human peripheral blood mononuclear cells (PBMC) were cultured unstimulated or stimulated with 10  $\mu$ g/mL PHA for 4 days. The mean LIF concentration was determined to be 1.4 pg/mL in unstimulated PBMC supernatant, 2,172.1 pg/mL in PHA stimulated PBMC supernatant.



Serum of eight individual healthy human donors was measured. The LIF concentration of detected samples was determined to be 3.0 pg/mL with a range of 1.5-5.2 pg/mL.