

For Research Use Only

# CD30/TNFRSF8 Recombinant antibody, PBS Only (Capture)

Catalog Number: 84241-2-PBS



## Basic Information

Catalog Number:

84241-2-PBS

Size:

1 mg/ml

Source:

Rabbit

Isotype:

IgG

GenBank Accession Number:

NM\_001243

GeneID (NCBI):

943

UNIPROT ID:

P28908

Full Name:

tumor necrosis factor receptor  
superfamily, member 8

Calculated MW:

64 kDa

Observed MW:

120 kDa

Purification Method:

Protein A purification

CloneNo.:

241330G11

## Applications

Tested Applications:

WB, Cytometric bead array, Sandwich ELISA, Indirect  
ELISA, Sample test

Species Specificity:

human

## Background Information

CD30, also known as TNFRSF8 or Ki-1, is a transmembrane glycoprotein belonging to the tumor necrosis factor receptor superfamily. It is composed of an extracellular domain with six cysteine-rich repeats, a transmembrane segment, and an intracellular domain (PMID: 1310894). CD30 is expressed on a small subset of activated T and B lymphocytes, and a variety of lymphoid neoplasms, with the highest expression in classical Hodgkin's lymphoma and anaplastic large cell lymphoma (PMID: 9826579; 28885612). The CD30 ligand (CD30L or CD153) is a type II transmembrane glycoprotein of the tumor necrosis factor ligand superfamily (PMID: 8701986). Signal transduction of CD30/CD30L utilizes signal transducers, TNFR-associated factors (TRAF1, 2, 3 and 5) (PMID: 9826579).

## Storage

Storage:

Store at -80°C.

**The product is shipped with ice packs. Upon receipt, store it immediately at -80°C**

Storage Buffer:

PBS Only

For technical support and original validation data for this product please contact:

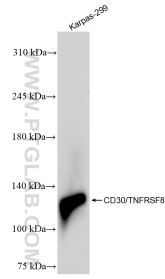
T: 4006900926

E: [Proteintech-CN@ptglab.com](mailto:Proteintech-CN@ptglab.com)

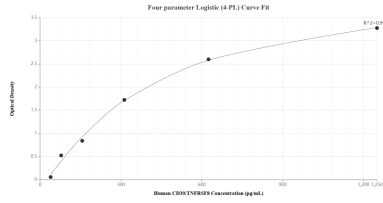
W: [ptgcn.com](http://ptgcn.com)

**This product is exclusively available under Proteintech Group brand and is not available to purchase from any other manufacturer.**

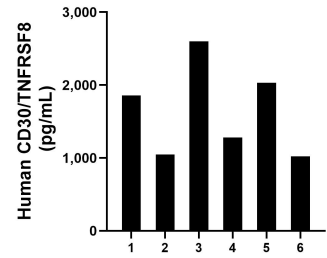
## Selected Validation Data



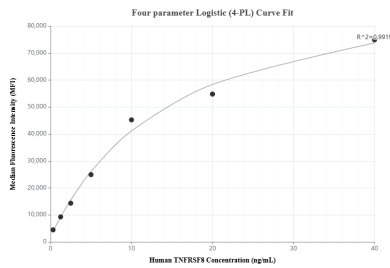
Karpas-299 cells were subjected to SDS PAGE followed by western blot with 84241-2-RR (CD30/TNFRSF8 antibody) at dilution of 1:10000 incubated at room temperature for 1.5 hours. This data was developed using the same antibody clone with 84241-2-PBS in a different storage buffer formulation.



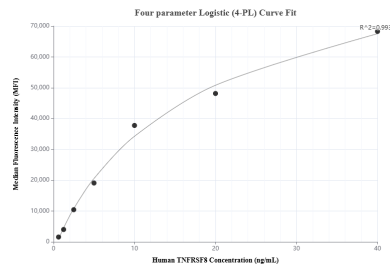
Sandwich ELISA standard curve of MP01137-1, Human CD30/TNFRSF8 Recombinant Matched Antibody Pair - PBS only. 84241-2-PBS was coated to a plate as the capture antibody and incubated with serial dilutions of standard RP02334. 84241-4-PBS was HRP conjugated as the detection antibody. Range: 39.1-1250 pg/mL.



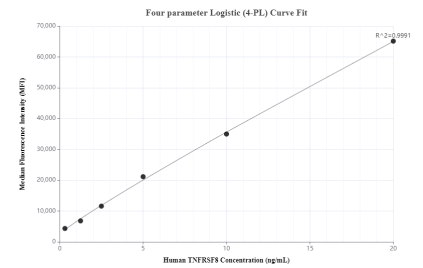
Serum of six individual healthy human donors was measured. The CD30/TNFRSF8 concentration of detected samples was determined to be 1,639.1 pg/mL with a range of 1,021.2-2,597.7 pg/mL.



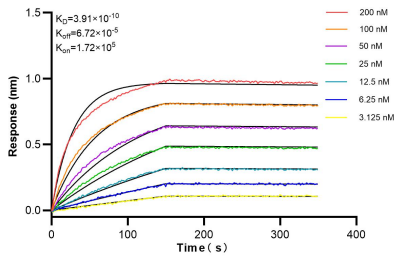
Cytometric bead array standard curve of MP01137-1, TNFRSF8/CD30 Recombinant Matched Antibody Pair, PBS Only. Capture antibody: 84241-2-PBS. Detection antibody: 84241-4-PBS. Standard: RP02334. Range: 0.313-40 ng/mL.



Cytometric bead array standard curve of MP01137-2, TNFRSF8/CD30 Recombinant Matched Antibody Pair, PBS Only. Capture antibody: 84241-2-PBS. Detection antibody: 84241-3-PBS. Standard: RP02334. Range: 0.625-40 ng/mL.



Cytometric bead array standard curve of MP01137-3, TNFRSF8/CD30 Recombinant Matched Antibody Pair, PBS Only. Capture antibody: 84241-2-PBS. Detection antibody: 84241-1-PBS. Standard: RP02334. Range: 0.313-20 ng/mL.



Biolayer interferometry (BLI) kinetic assays of 84241-2-RR against Human CD30/TNFRSF8 were performed. The affinity constant is 0.391 nM.