

For Research Use Only

CD30/TNFRSF8 Recombinant antibody, PBS Only (Detector)

Catalog Number: 84241-4-PBS



Basic Information

Catalog Number:

84241-4-PBS

Size:

1 mg/ml

Source:

Rabbit

Isotype:

IgG

GenBank Accession Number:

NM_001243

GeneID (NCBI):

943

UNIPROT ID:

P28908

Full Name:

tumor necrosis factor receptor
superfamily, member 8

Calculated MW:

64 kDa

Purification Method:

Protein A purification

CloneNo.:

241331E12

Applications

Tested Applications:

Cytometric bead array, Sandwich ELISA, Indirect ELISA,
Sample test

Species Specificity:

human

Background Information

Storage

Storage:

Store at -80°C.

The product is shipped with ice packs. Upon receipt, store it immediately at -80°C

Storage Buffer:

PBS Only

For technical support and original validation data for this product please contact:

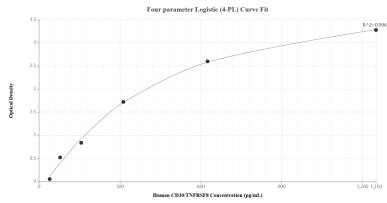
T: 4006900926

E: Proteintech-CN@ptglab.com

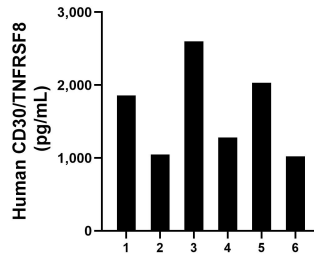
W: ptgcn.com

This product is exclusively available under Proteintech Group brand and is not available to purchase from any other manufacturer.

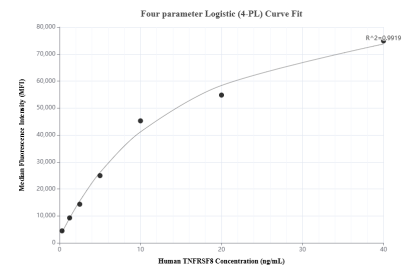
Selected Validation Data



Sandwich ELISA standard curve of MP01137-1, Human CD30/TNFRSF8 Recombinant Matched Antibody Pair - PBS only. 84241-2-PBS was coated to a plate as the capture antibody and incubated with serial dilutions of standard RP02334. 84241-4-PBS was HRP conjugated as the detection antibody. Range: 39.1-1250 pg/mL



Serum of six individual healthy human donors was measured. The CD30/TNFRSF8 concentration of detected samples was determined to be 1,639.1 pg/mL with a range of 1,021.2-2,597.7 pg/mL



Cytometric bead array standard curve of MP01137-1, TNFRSF8/CD30 Recombinant Matched Antibody Pair, PBS Only. Capture antibody: 84241-2-PBS. Detection antibody: 84241-4-PBS. Standard: RP02334. Range: 0.313-40 ng/mL