

For Research Use Only

TNFR1/CD120a Recombinant antibody, PBS Only (Detector)

Catalog Number: 84243-4-PBS



Basic Information

Catalog Number:

84243-4-PBS

Size:

1 mg/ml

Source:

Rabbit

Isotype:

IgG

GenBank Accession Number:

BC010140

GeneID (NCBI):

7132

UNIPROT ID:

P19438

Full Name:

tumor necrosis factor receptor
superfamily, member 1A

Calculated MW:

455 aa, 50 kDa

Purification Method:

Protein A purification

CloneNo.:

241336H2

Applications

Tested Applications:

Sandwich ELISA, Indirect ELISA, Sample test

Species Specificity:

human

Background Information

Storage

Storage:

Store at -80°C.

The product is shipped with ice packs. Upon receipt, store it immediately at -80°C

Storage Buffer:

PBS Only

For technical support and original validation data for this product please contact:

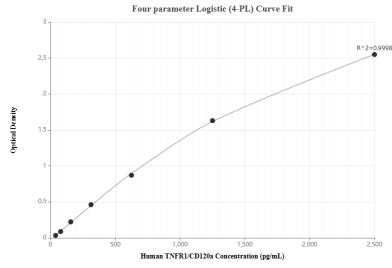
T: 4006900926

E: Proteintech-CN@ptglab.com

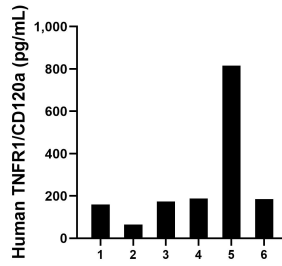
W: ptgcn.com

This product is exclusively available under Proteintech Group brand and is not available to purchase from any other manufacturer.

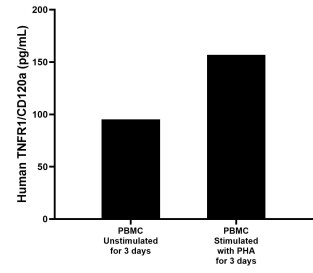
Selected Validation Data



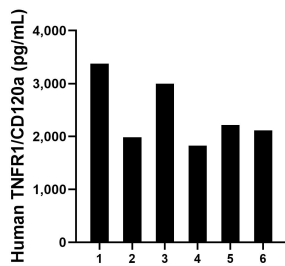
Sandwich ELISA standard curve of MP00099-3, Human TNFR1/CD120a Recombinant Matched Antibody Pair - PBS only. 84243-6-PBS was coated to a plate as the capture antibody and incubated with serial dilutions of standard RPO2331. 84243-4-PBS was HRP conjugated as the detection antibody. Range: 39.1-2500 pg/mL



Urine of six individual healthy human donors was measured. The human TNFR1/CD120a concentration of detected samples was determined to be 264.6 pg/mL with a range of 64.6 - 815.7 pg/mL



Human peripheral blood mononuclear cells (PBMC) were cultured unstimulated or stimulated with 10 μ g/mL PHA for 3 days. The mean TNFR1/CD120a concentration was determined to be 95.3 pg/mL in unstimulated PBMC supernatant, 156.9 pg/mL in PHA stimulated PBMC supernatant.



Serum of six individual healthy human donors was measured. The human TNFR1/CD120a concentration of detected samples was determined to be 2,420.0 pg/mL with a range of 1,829.1 - 3,374.3 pg/mL