

For Research Use Only

OX40/TNFRSF4 Recombinant antibody, PBS Only (Capture)

Catalog Number: 84247-2-PBS



Basic Information

Catalog Number: 84247-2-PBS	GenBank Accession Number: NM_003327	Purification Method: Protein A purification
Size: 1 mg/ml	GeneID (NCBI): 7293	CloneNo.: 241398D11
Source: Rabbit	UNIPROT ID: P43489	
Isotype: IgG	Full Name: tumor necrosis factor receptor superfamily, member 4	
	Calculated MW: 29 kDa	

Applications

Tested Applications:
Cytometric bead array, Sandwich ELISA, Indirect ELISA,
Sample test

Species Specificity:
human

Background Information

Storage

Storage:
Store at -80°C.
The product is shipped with ice packs. Upon receipt, store it immediately at -80°C
Storage Buffer:
PBS Only

For technical support and original validation data for this product please contact:

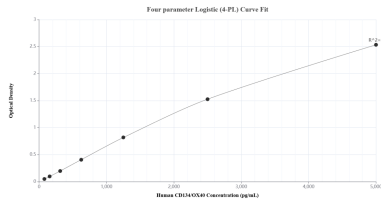
T: 4006900926

E: Proteintech-CN@ptglab.com

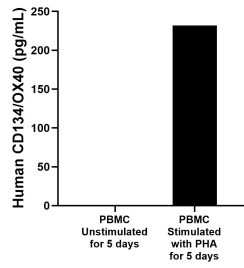
W: ptgcn.com

This product is exclusively available under Proteintech Group brand and is not available to purchase from any other manufacturer.

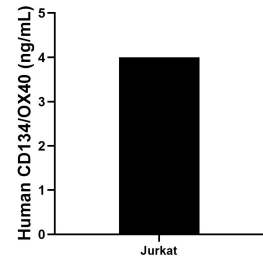
Selected Validation Data



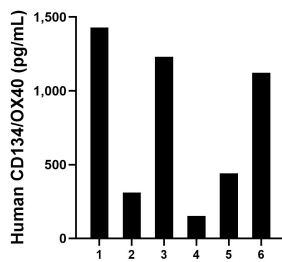
Sandwich ELISA standard curve of MP01138-2, Human CD134/OX40 Recombinant Matched Antibody Pair - PBS only. 84247-2-PBS was coated to a plate as the capture antibody and incubated with serial dilutions of standard Eg1261. 84247-1-PBS was HRP conjugated as the detection antibody. Range: 78.1-5000 pg/mL



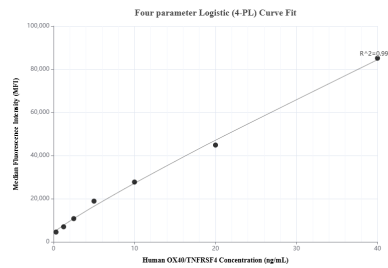
Human peripheral blood mononuclear cells (PBMC) were cultured unstimulated or stimulated with 10 μ g/mL PHA for 5 days. The mean CD134/OX40 concentration was not determined in unstimulated PBMC supernatant, 232.1 pg/mL in PHA stimulated PBMC supernatant.



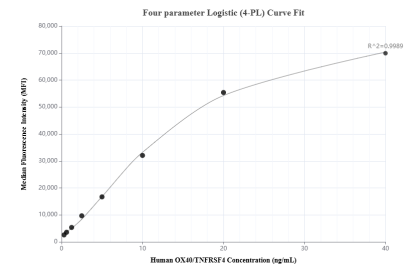
The mean CD134/OX40 concentration was determined to be 4.0 ng/mL in Jurkat cell extract based on a 1.5 mg/mL extract load.



Serum of six individual healthy human donors was measured. The CD134/OX40 concentration of detected samples was determined to be 780.8 pg/mL with a range of 152.2-1,428.1 pg/mL



Cytometric bead array standard curve of MP01138-1, CD134/OX40 Recombinant Matched Antibody Pair, PBS Only. Capture antibody: 84247-2-PBS. Detection antibody: 84247-3-PBS. Standard: Eg1261. Range: 0.313-40 ng/mL



Cytometric bead array standard curve of MP01138-2, CD134/OX40 Recombinant Matched Antibody Pair, PBS Only. Capture antibody: 84247-2-PBS. Detection antibody: 84247-1-PBS. Standard: Eg1261. Range: 0.313-40 ng/mL