

For Research Use Only

# MAGEA4 Recombinant antibody, PBS Only (Detector)

Catalog Number: 84248-1-PBS



## Basic Information

<b>Catalog Number:</b> 84248-1-PBS	<b>GenBank Accession Number:</b> BC017723	<b>Purification Method:</b> Protein A purification
<b>Size:</b> 1 mg/ml	<b>GeneID (NCBI):</b> 4103	<b>CloneNo.:</b> 241558A1
<b>Source:</b> Rabbit	<b>UNIPROT ID:</b> P43358	
<b>Isotype:</b> IgG	<b>Full Name:</b> melanoma antigen family A, 4	
<b>Immunogen Catalog Number:</b> AG3193	<b>Calculated MW:</b> 317 aa, 35 kDa	

## Applications

**Tested Applications:**  
Cytometric bead array, Sandwich ELISA, Indirect ELISA, Sample test

**Species Specificity:**  
human

## Background Information

### Storage

**Storage:**  
Store at -80°C.  
**The product is shipped with ice packs. Upon receipt, store it immediately at -80°C**

**Storage Buffer:**  
PBS Only

For technical support and original validation data for this product please contact:

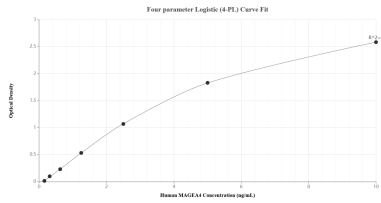
T: 4006900926

E: [Proteintech-CN@ptglab.com](mailto:Proteintech-CN@ptglab.com)

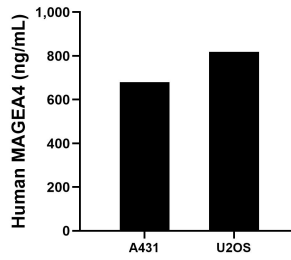
W: [ptgcn.com](http://ptgcn.com)

**This product is exclusively available under Proteintech Group brand and is not available to purchase from any other manufacturer.**

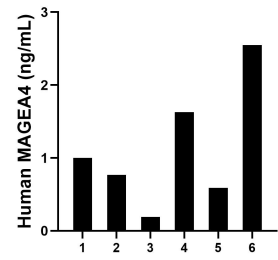
## Selected Validation Data



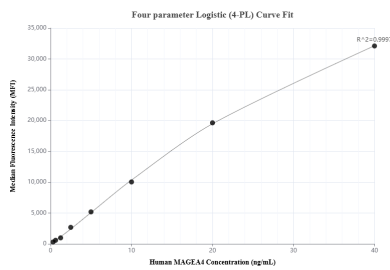
Sandwich ELISA standard curve of MP01144-3, Human MAGEA4 Recombinant Matched Antibody Pair - PBS only. 84248-3-PBS was coated to a plate as the capture antibody and incubated with serial dilutions of standard Ag3193. 84248-1-PBS was HRP conjugated as the detection antibody. Range: 0.156-10 ng/mL



The mean MAGEA4 concentration was determined to be 680.30 ng/mL in A431 cell extract based on a 2.60 mg/mL extract load and 818.54 ng/mL in U2OS cell extract based on a 3.50 mg/mL extract load.



Serum of six individual healthy human donors was measured. The MAGEA4 concentration of detected samples was determined to be 1.12 ng/mL with a range of 0.19-2.55 ng/mL



Cytometric bead array standard curve of MP01144-3, MAGEA4 Recombinant Matched Antibody Pair, PBS Only. Capture antibody: 84248-3-PBS. Detection antibody: 84248-1-PBS. Standard: Ag3193. Range: 0.313-40 ng/mL