

For Research Use Only

SLAMF7/CD319 Recombinant antibody, PBS Only (Capture)

Catalog Number: 84254-1-PBS



Basic Information

Catalog Number: 84254-1-PBS	GenBank Accession Number: BC027867	Purification Method: Protein A purification
Size: 1 mg/ml	GeneID (NCBI): 57823	CloneNo.: 241320B6
Source: Rabbit	UNIPROT ID: Q9NQ25	
Isotype: IgG	Full Name: SLAM family member 7	
	Calculated MW: 335 aa, 37 kDa	
	Observed MW: 75 kDa	

Applications

Tested Applications:
WB, IHC, Cytometric bead array, Indirect ELISA

Species Specificity:
human

Background Information

Signaling lymphocyte activation molecule (SLAM) family receptors is a group of type I transmembrane receptors belonging to the immunoglobulin superfamily (PMID: 37251372). The SLAM family contains nine members that contain an extracellular segment comprising two or four Ig-like domains (V-like variable and C2-like constant), a transmembrane region and a cytoplasmic tail (PMID: 29662641). They are involved in various physiological and pathological processes, including the regulation of immunological responses and the route of viral entry. SLAMF7, also known as CS1, CRACC or CD319, is expressed on NK cells, CD8+ T lymphocytes, B lymphocytes, and mature dendritic cells (PMID: 28861320). It exerts both activating and inhibitory effects depending on the expression status of SAP or EAT-2. SLAMF7 is overexpressed in multiple myeloma and makes it a target for immunotherapy (PMID: 28861320). The native molecular weight of SLAMF7 is 37 kDa and the apparent molecular mass shifts due to glycosylation (PMID: 11698418; 36381324).

Storage

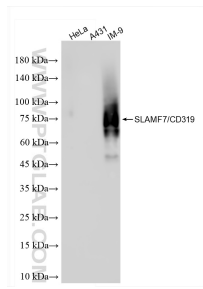
Storage:
Store at -80°C.
The product is shipped with ice packs. Upon receipt, store it immediately at -80°C

Storage Buffer:
PBS Only

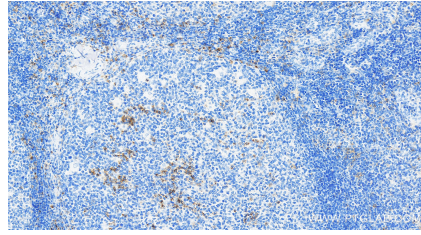
For technical support and original validation data for this product please contact:
T: 4006900926 E: Proteintech-CN@ptglab.com W: ptgcn.com

This product is exclusively available under Proteintech Group brand and is not available to purchase from any other manufacturer.

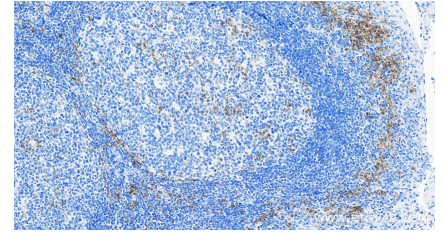
Selected Validation Data



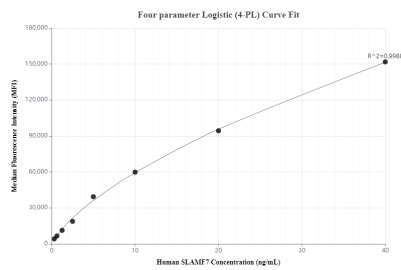
IM-9 cells were subjected to SDS PAGE followed by western blot with 84254-1-RR (SLAMF7 antibody) at dilution of 1:4000 incubated at room temperature for 1.5 hours. This data was developed using the same antibody clone with 84254-1-PBS in a different storage buffer formulation.



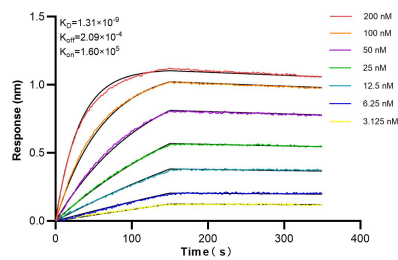
Immunohistochemical analysis of paraffin-embedded human tonsillitis tissue slide using 84254-1-RR (SLAMF7/CD319 antibody) at dilution of 1:1000 (under 40x lens). Heat mediated antigen retrieval with Tris-EDTA buffer (pH 9.0). This data was developed using the same antibody clone with 84254-1-PBS in a different storage buffer formulation.



Immunohistochemical analysis of paraffin-embedded human tonsillitis tissue slide using 84254-1-RR (SLAMF7/CD319 antibody) at dilution of 1:1000 (under 40x lens). Heat mediated antigen retrieval with Tris-EDTA buffer (pH 9.0). This data was developed using the same antibody clone with 84254-1-PBS in a different storage buffer formulation.



Cytometric bead array standard curve of MP01157-2, SLAMF7 Recombinant Matched Antibody Pair, PBS Only. Capture antibody: 84254-1-PBS. Detection antibody: 84254-3-PBS. Standard: RP02327. Range: 0.313-40 ng/mL.



Biolayer interferometry (BLI) kinetic assays of 84254-1-RR against Human SLAMF7/CD319 were performed. The affinity constant is 1.31 nM.