

For Research Use Only

# CD97 Recombinant antibody, PBS Only (Detector)

Catalog Number: 84255-1-PBS



## Basic Information

<b>Catalog Number:</b> 84255-1-PBS	<b>GenBank Accession Number:</b> BC026690	<b>Purification Method:</b> Protein A purification
<b>Size:</b> 1 mg/ml	<b>GeneID (NCBI):</b> 976	<b>CloneNo.:</b> 241334A12
<b>Source:</b> Rabbit	<b>UNIPROT ID:</b> P48960	
<b>Isotype:</b> IgG	<b>Full Name:</b> CD97 molecule	
	<b>Calculated MW:</b> 722 aa, 79 kDa	

## Applications

**Tested Applications:**  
Cytometric bead array, Sandwich ELISA, Indirect ELISA,  
Sample test

**Species Specificity:**  
human

## Background Information

### Storage

**Storage:**  
Store at -80°C.  
**The product is shipped with ice packs. Upon receipt, store it immediately at -80°C**

**Storage Buffer:**  
PBS Only

For technical support and original validation data for this product please contact:

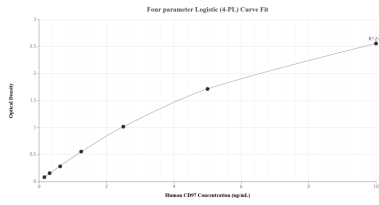
T: 4006900926

E: [Proteintech-CN@ptglab.com](mailto:Proteintech-CN@ptglab.com)

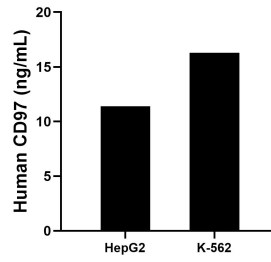
W: [ptgcn.com](http://ptgcn.com)

**This product is exclusively available under Proteintech Group brand and is not available to purchase from any other manufacturer.**

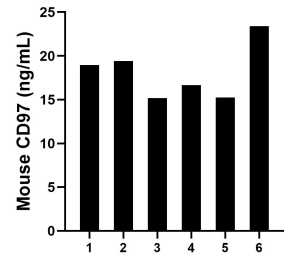
## Selected Validation Data



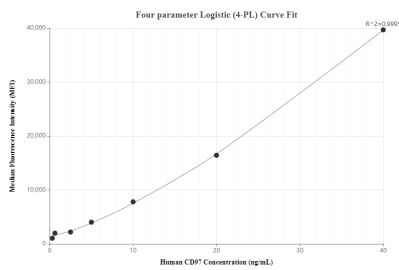
Sandwich ELISA standard curve of MP01158-4, Human CD97 Recombinant Matched Antibody Pair - PBS only. 84255-7-PBS was coated to a plate as the capture antibody and incubated with serial dilutions of standard RP02330. 84255-1-PBS was HRP conjugated as the detection antibody. Range: 0.156-10 ng/mL.



The mean CD97 concentration was determined to be 11.39 ng/mL in HepG2 cell extract based on a 2.30 mg/mL extract load and 16.28 ng/mL in K-562 cell extract based on a 2.40 mg/mL extract load.



Serum of six mice was measured. The CD97 concentration of detected samples was determined to be 18.14 ng/mL with a range of 15.16-23.41 ng/mL.



Cytometric bead array standard curve of MP01158-2, CD97 Recombinant Matched Antibody Pair, PBS Only. Capture antibody: 84255-2-PBS. Detection antibody: 84255-1-PBS. Standard: RP02330. Range: 0.313-40 ng/mL.