

For Research Use Only

# METTL2 Recombinant antibody, PBS Only (Capture)

Catalog Number:84257-1-PBS



## Basic Information

<b>Catalog Number:</b> 84257-1-PBS	<b>GenBank Accession Number:</b> BC107586	<b>Purification Method:</b> Protein A purification
<b>Size:</b> 1 mg/ml	<b>GeneID (NCBI):</b> 55798	<b>CloneNo.:</b> 241490A3
<b>Source:</b> Rabbit	<b>UNIPROT ID:</b> Q6P1Q9	
<b>Isotype:</b> IgG	<b>Full Name:</b> methyltransferase like 2B	
<b>Immunogen Catalog Number:</b> AG10410	<b>Calculated MW:</b> 313 aa, 36 kDa	
	<b>Observed MW:</b> 36-43 kDa	

## Applications

**Tested Applications:**  
WB, IF/ICC, Cytometric bead array, Indirect ELISA

**Species Specificity:**  
human

## Background Information

METTL2A and METTL2B are required for the threonyl and arginyl tRNA methylation. METTL2 methyltransferase is responsible for 3-methylcytosine modification of arginine tRNAs in mammals. METTL2A and METTL2B are in higher homology 99%. This antibody detects both METTL2A and METTL2B.

## Storage

**Storage:**  
Store at -80°C.  
**The product is shipped with ice packs. Upon receipt, store it immediately at -80°C**

**Storage Buffer:**  
PBS Only

For technical support and original validation data for this product please contact:

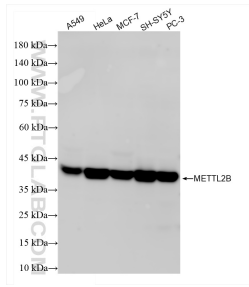
T: 4006900926

E: [Proteintech-CN@ptglab.com](mailto:Proteintech-CN@ptglab.com)

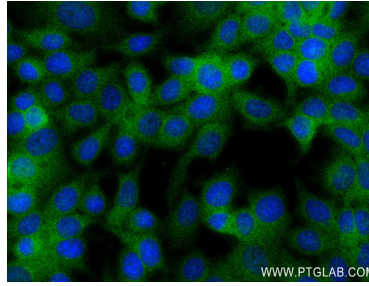
W: [ptgcn.com](http://ptgcn.com)

**This product is exclusively available under Proteintech Group brand and is not available to purchase from any other manufacturer.**

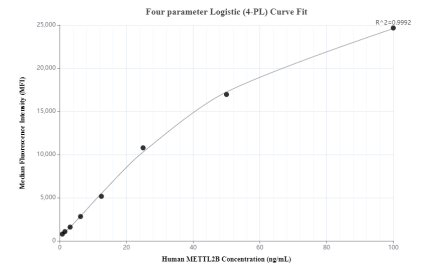
## Selected Validation Data



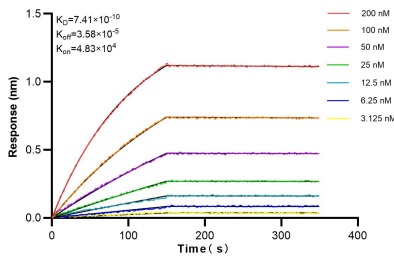
Various lysates were subjected to SDS PAGE followed by western blot with 84257-1-RR (METTL2 antibody) at dilution of 1:5000 incubated at room temperature for 1.5 hours. This data was developed using the same antibody clone with 84257-1-PBS in a different storage buffer formulation.



Immunofluorescent analysis of (4% PFA) fixed MCF-7 cells using METTL2 antibody (84257-1-RR, Clone: 241490A3) at dilution of 1:250 and CoraLite@488-Conjugated Goat Anti-Rabbit IgG(H+L) (SA00013-2). This data was developed using the same antibody clone with 84257-1-PBS in a different storage buffer formulation.



Cytometric bead array standard curve of MP01163-3, METTL2B Recombinant Matched Antibody Pair, PBS Only. Capture antibody: 84257-1-PBS. Detection antibody: 84257-3-PBS. Standard: Ag10410. Range: 0.781-100 ng/mL.



Bi-layer interferometry (BLI) kinetic assays of 84257-1-RR against Human METTL2 were performed. The affinity constant is 0.741 nM.