

For Research Use Only

# C-Kit Recombinant antibody, PBS Only (Detector)

Catalog Number: 84259-6-PBS



## Basic Information

<b>Catalog Number:</b> 84259-6-PBS	<b>GenBank Accession Number:</b> BC071593	<b>Purification Method:</b> Protein A purification
<b>Size:</b> 1 mg/ml	<b>GeneID (NCBI):</b> 3815	<b>CloneNo.:</b> 241313D1
<b>Source:</b> Rabbit	<b>UNIPROT ID:</b> P10721	
<b>Isotype:</b> IgG	<b>Full Name:</b> v-kit Hardy-Zuckerman 4 feline sarcoma viral oncogene homolog	
	<b>Calculated MW:</b> 976 aa, 110 kDa	

## Applications

**Tested Applications:**  
Sandwich ELISA, Indirect ELISA, Sample test

**Species Specificity:**  
human

## Background Information

### Storage

**Storage:**  
Store at -80°C.  
**The product is shipped with ice packs. Upon receipt, store it immediately at -80°C**

**Storage Buffer:**  
PBS Only

For technical support and original validation data for this product please contact:

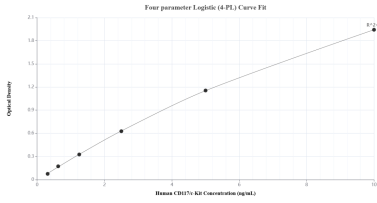
T: 4006900926

E: [Proteintech-CN@ptglab.com](mailto:Proteintech-CN@ptglab.com)

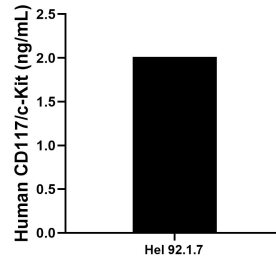
W: [ptgcn.com](http://ptgcn.com)

**This product is exclusively available under Proteintech Group brand and is not available to purchase from any other manufacturer.**

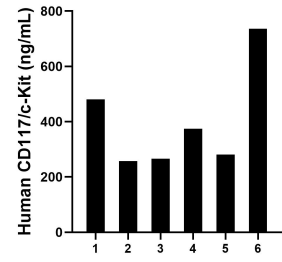
## Selected Validation Data



Sandwich ELISA standard curve of MP01171-4, Human CD117/c-Kit Recombinant Matched Antibody Pair - PBS only. 84259-8-PBS was coated to a plate as the capture antibody and incubated with serial dilutions of standard RP02323. 84259-6-PBS was HRP conjugated as the detection antibody. Range: 0.313-10 ng/mL



Hel 92.1.7 cells were cultured in DMEM supplemented with 10% fetal bovine serum, 2.5 mM L-glutamine, 100 U/mL penicillin, and 100  $\mu$ g/mL streptomycin sulfate. An aliquot of the cell culture supernate was removed, assayed for human CD117/c-Kit, and measured 2.01 ng/mL



Serum of six individual healthy human donors was measured. The CD117/c-Kit concentration of detected samples was determined to be 399.22 ng/mL with a range of 257.05-736.28 ng/mL