

For Research Use Only

# PKC Delta Recombinant antibody

Catalog Number:84261-5-RR



## Basic Information

<b>Catalog Number:</b> 84261-5-RR	<b>GenBank Accession Number:</b> BC043350	<b>Purification Method:</b> Protein A purification
<b>Size:</b> 1000 µg/ml	<b>GeneID (NCBI):</b> 5580	<b>CloneNo.:</b> 241608A2
<b>Source:</b> Rabbit	<b>UNIPROT ID:</b> Q05655	<b>Recommended Dilutions:</b> WB 1:1000-1:4000 IF/ICC 1:250-1:1000
<b>Isotype:</b> IgG	<b>Full Name:</b> protein kinase C, delta	
<b>Immunogen Catalog Number:</b> AG5473	<b>Calculated MW:</b> 78 kDa	
	<b>Observed MW:</b> 70-80 kDa	

## Applications

<b>Tested Applications:</b> WB, IF/ICC, FC (Intra), ELISA	<b>Positive Controls:</b> WB : NIH/3T3 cells, mouse brain tissue, rat brain tissue
<b>Species Specificity:</b> human	<b>IF/ICC :</b> HeLa cells,

## Background Information

PKC Delta is a member of the protein kinase C family of serine- and threonine-specific protein kinases. The encoded protein is activated by diacylglycerol and is both a tumor suppressor and a positive regulator of cell cycle progression. Also, this protein can positively or negatively regulate apoptosis. Defects in this gene are a cause of autoimmune lymphoproliferative syndrom.

## Storage

**Storage:**  
Store at -20°C. Stable for one year after shipment.  
**Storage Buffer:**  
PBS with 0.02% sodium azide and 50% glycerol pH 7.3.  
**Aliquoting is unnecessary for -20°C storage**

For technical support and original validation data for this product please contact:

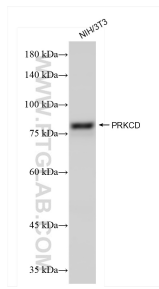
T: 4006900926

E: [Proteintech-CN@ptglab.com](mailto:Proteintech-CN@ptglab.com)

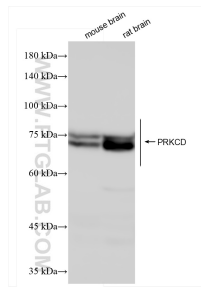
W: [ptgcn.com](http://ptgcn.com)

**This product is exclusively available under Proteintech Group brand and is not available to purchase from any other manufacturer.**

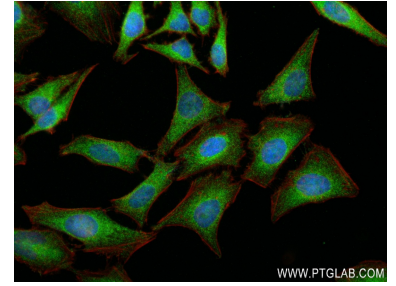
## Selected Validation Data



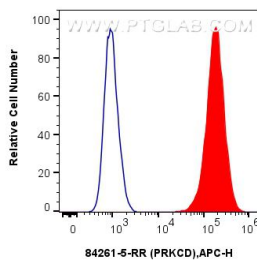
NIH/3T3 cells were subjected to SDS PAGE followed by western blot with 84261-5-RR (PKC Delta antibody) at dilution of 1:2000 incubated at room temperature for 1.5 hours.



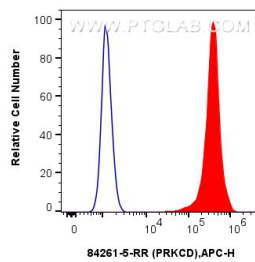
Various lysates were subjected to SDS PAGE followed by western blot with 84261-5-RR (PKC Delta antibody) at dilution of 1:2000 incubated at room temperature for 1.5 hours.



Immunofluorescent analysis of (4% PFA) fixed HeLa cells using PRKCD antibody (84261-5-RR, Clone: 241608A2) at dilution of 1:500 and CoraLite®488-Conjugated Goat Anti-Rabbit IgG(H+L) (SA00013-2), CL594-Phalloidin (red).



1x10<sup>6</sup> HT-1080 cells were intracellularly stained with 0.25 ug PRKCD Recombinant Antibody (84261-5-RR, Clone:241608A2) and APC-Conjugated Goat Anti-Rabbit IgG(H+L)(red), or 0.25 ug Rabbit IgG Isotype Control Recombinant Antibody (98136-1-RR, Clone: 240953C9) (blue). Cells were fixed with 4% PFA and permeabilized with Flow Cytometry Perm Buffer (PF00011-C).



1x10<sup>6</sup> HeLa cells were intracellularly stained with 0.25 ug PRKCD Recombinant Antibody (84261-5-RR, Clone:241608A2) and APC-Conjugated Goat Anti-Rabbit IgG(H+L)(red), or 0.25 ug Rabbit IgG Isotype Control Recombinant Antibody (98136-1-RR, Clone: 240953C9) (blue). Cells were fixed with 4% PFA and permeabilized with Flow Cytometry Perm Buffer (PF00011-C).