

For Research Use Only

# BTLA/CD272 Recombinant antibody, PBS Only (Capture)

Catalog Number:84262-5-PBS



## Basic Information

Catalog Number:

84262-5-PBS

Size:

1 mg/ml

Source:

Rabbit

Isotype:

IgG

GenBank Accession Number:

BC107091

GeneID (NCBI):

151888

UNIPROT ID:

Q7Z6A9

Full Name:

B and T Lymphocyte associated

Calculated MW:

289 aa, 33 kDa

Purification Method:

Protein A purification

CloneNo.:

241319B1

## Applications

Tested Applications:

Cytometric bead array, Sandwich ELISA, Indirect ELISA,  
Sample test

Species Specificity:

human

## Background Information

### Storage

Storage:

Store at -80°C.

**The product is shipped with ice packs. Upon receipt, store it immediately at -80°C**

Storage Buffer:

PBS Only

For technical support and original validation data for this product please contact:

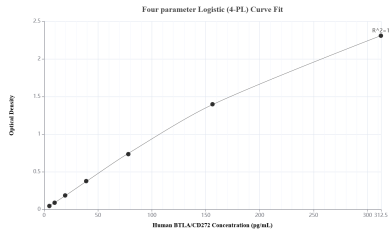
T: 4006900926

E: [Proteintech-CN@ptglab.com](mailto:Proteintech-CN@ptglab.com)

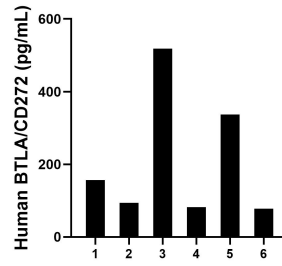
W: [ptgcn.com](http://ptgcn.com)

**This product is exclusively available under Proteintech Group brand and is not available to purchase from any other manufacturer.**

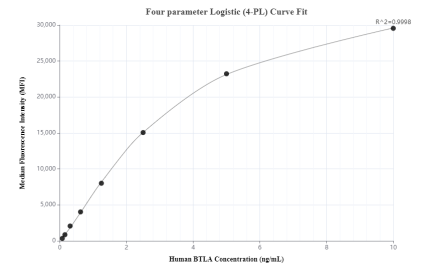
## Selected Validation Data



Sandwich ELISA standard curve of MP01168-4, Human BTLA/CD272 Recombinant Matched Antibody Pair - PBS only. 84262-5-PBS was coated to a plate as the capture antibody and incubated with serial dilutions of standard RP02326. 84262-6-PBS was HRP conjugated as the detection antibody. Range: 4.88-313 pg/mL



Serum of six individual healthy human donors was measured. The BTLA/CD272 concentration of detected samples was determined to be 211.0 ng/mL with a range of 78.0-518.0 ng/mL



Cytometric bead array standard curve of MP01168-1, BTLA/CD272 Recombinant Matched Antibody Pair, PBS Only. Capture antibody: 84262-5-PBS. Detection antibody: 84262-4-PBS. Standard: RP02326. Range: 0.078-10 ng/mL