

For Research Use Only

# Complement component C7/C7 Recombinant antibody, PBS Only (Capture/Detector)

Catalog Number: 84263-2-PBS



## Basic Information

<b>Catalog Number:</b> 84263-2-PBS	<b>GenBank Accession Number:</b> NM_000587.4	<b>Purification Method:</b> Protein A purification
<b>Size:</b> 1 mg/ml	<b>GeneID (NCBI):</b> 730	<b>CloneNo.:</b> 241551C11
<b>Source:</b> Rabbit	<b>UNIPROT ID:</b> P10643	
<b>Isotype:</b> IgG	<b>Full Name:</b> complement component 7	
	<b>Calculated MW:</b> 94kDa	

## Applications

**Tested Applications:**  
Cytometric bead array, Sandwich ELISA, Indirect ELISA,  
Sample test

**Species Specificity:**  
human

## Background Information

### Storage

**Storage:**  
Store at -80°C.  
**The product is shipped with ice packs. Upon receipt, store it immediately at -80°C**

**Storage Buffer:**  
PBS Only

For technical support and original validation data for this product please contact:

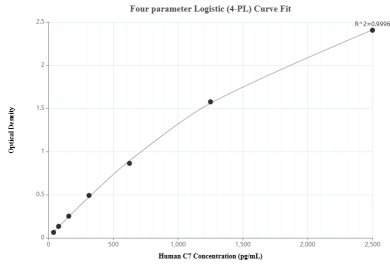
T: 4006900926

E: [Proteintech-CN@ptglab.com](mailto:Proteintech-CN@ptglab.com)

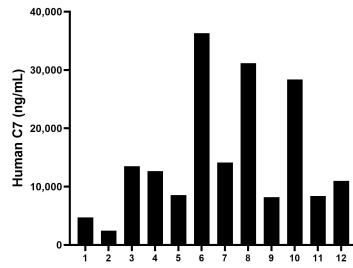
W: [ptgcn.com](http://ptgcn.com)

**This product is exclusively available under Proteintech Group brand and is not available to purchase from any other manufacturer.**

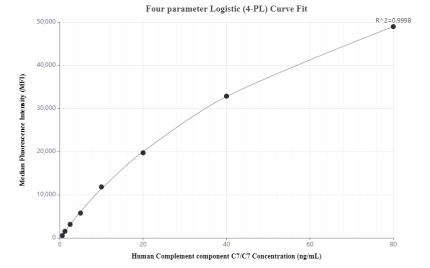
## Selected Validation Data



Sandwich ELISA standard curve of MP01179-4, Human C7 Recombinant Matched Antibody Pair - PBS only. 84263-2-PBS was coated to a plate as the capture antibody and incubated with serial dilutions of standard Eg1202. 84263-4-PBS was HRP conjugated as the detection antibody. Range: 39.1-2500 pg/mL



Serum of twelve individual healthy human donors was measured. The human C7 concentration of detected samples was determined to be 14,954.75 ng/mL with a range of 2,439.43 - 36,317.82 ng/mL



Cytometric bead array standard curve of MP01179-3, Complement component C7/C7 Recombinant Matched Antibody Pair, PBS Only. Capture antibody: 84263-4-PBS. Detection antibody: 84263-2-PBS. Standard: Eg1202. Range: 0.625-80 ng/mL