

For Research Use Only

# Complement component C7/C7 Recombinant antibody, PBS Only (Capture/Detector)

Catalog Number: 84263-4-PBS



## Basic Information

Catalog Number:

84263-4-PBS

Size:

1 mg/ml

Source:

Rabbit

Isotype:

IgG

GenBank Accession Number:

NM\_000587.4

GeneID (NCBI):

730

UNIPROT ID:

P10643

Full Name:

complement component 7

Calculated MW:

94kDa

Purification Method:

Protein A purification

CloneNo.:

241551B8

## Applications

Tested Applications:

Cytometric bead array, Sandwich ELISA, Indirect ELISA,  
Sample test

Species Specificity:

human

## Background Information

### Storage

Storage:

Store at -80°C.

**The product is shipped with ice packs. Upon receipt, store it immediately at -80°C**

Storage Buffer:

PBS Only

For technical support and original validation data for this product please contact:

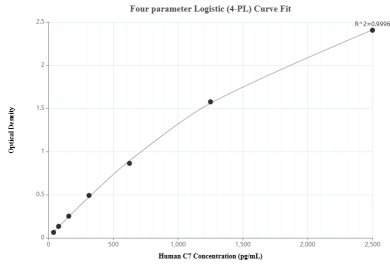
T: 4006900926

E: [Proteintech-CN@ptglab.com](mailto:Proteintech-CN@ptglab.com)

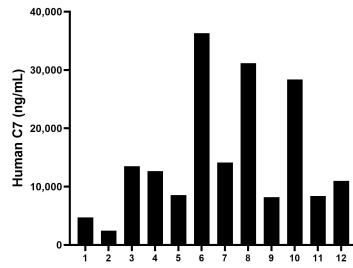
W: [ptgcn.com](http://ptgcn.com)

**This product is exclusively available under Proteintech Group brand and is not available to purchase from any other manufacturer.**

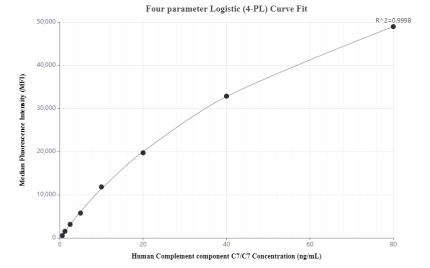
## Selected Validation Data



Sandwich ELISA standard curve of MP01179-4, Human C7 Recombinant Matched Antibody Pair - PBS only. 84263-2-PBS was coated to a plate as the capture antibody and incubated with serial dilutions of standard Eg1202. 84263-4-PBS was HRP conjugated as the detection antibody. Range: 39.1-2500 pg/mL



Serum of twelve individual healthy human donors was measured. The human C7 concentration of detected samples was determined to be 14,954.75 ng/mL with a range of 2,439.43 - 36,317.82 ng/mL



Cytometric bead array standard curve of MP01179-3, Complement component C7/C7 Recombinant Matched Antibody Pair, PBS Only. Capture antibody: 84263-4-PBS. Detection antibody: 84263-2-PBS. Standard: Eg1202. Range: 0.625-80 ng/mL