

For Research Use Only

GBP2 Recombinant antibody, PBS Only

Catalog Number: 84264-6-PBS



Basic Information

Catalog Number: 84264-6-PBS	GenBank Accession Number: BC022272	Purification Method: Protein A purification
Size: 1 mg/ml	GeneID (NCBI): 2634	CloneNo.: 241580C12
Source: Rabbit	UNIPROT ID: P32456	
Isotype: IgG	Full Name: guanylate binding protein 2, interferon-inducible	
Immunogen Catalog Number: AG2425	Calculated MW: 591 aa, 67 kDa	
	Observed MW: 67 kDa	

Applications

Tested Applications:
WB, IF/ICC, FC (Intra), Indirect ELISA

Species Specificity:
human

Background Information

GBP2 is a member of the GTPase family and is crucial to host immunity against pathogens. GBP2 is also used as a marker of interferon (IFN) responsiveness because it is one of the most highly expressed genes after IFN- γ stimulation. Increased GBP2 expression is also associated with a better prognosis in breast cancer and may have a role in T-cell defense against breast cancer. Interestingly, GBP2 expression in NIH/3T3 fibroblasts inhibited Rac activation and matrix metalloproteinase-9 expression, suggesting a possible role for GBP2 in regulating cancer metastasis. The molecular weight of GBP2 is 67 kDa. (PMID: 29072687, 35383115)

Storage

Storage:
Store at -80°C.
The product is shipped with ice packs. Upon receipt, store it immediately at -80°C

Storage Buffer:
PBS Only

For technical support and original validation data for this product please contact:

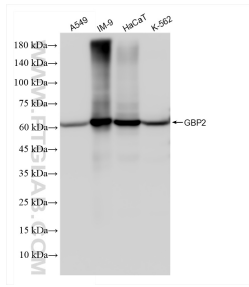
T: 4006900926

E: Proteintech-CN@ptglab.com

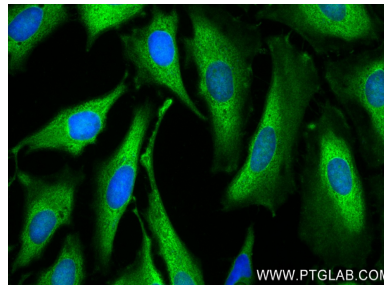
W: ptgcn.com

This product is exclusively available under Proteintech Group brand and is not available to purchase from any other manufacturer.

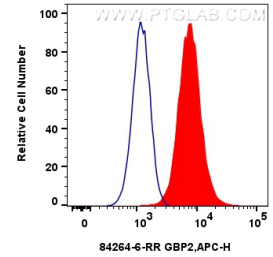
Selected Validation Data



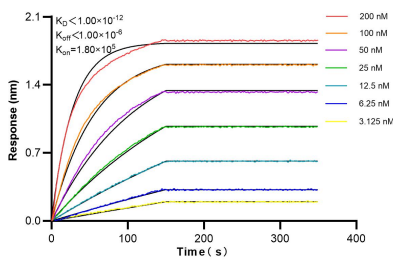
Various lysates were subjected to SDS PAGE followed by western blot with 84264-6-RR (GBP2 antibody) at dilution of 1:10000 incubated at room temperature for 1.5 hours. This data was developed using the same antibody clone with 84264-6-PBS in a different storage buffer formulation.



Immunofluorescent analysis of (-20°C Ethanol) fixed HeLa cells using GBP2 antibody (84264-6-RR, Clone: 241580C12.) at dilution of 1:250 and CoraLite®488-Conjugated Goat Anti-Rabbit IgG(H+L) (SA00013-2). This data was developed using the same antibody clone with 84264-6-PBS in a different storage buffer formulation.



1x10⁶ A549 cells were intracellularly stained with 0.2 ug GBP2 Recombinant antibody (84264-6-RR, Clone:241580C12) and Multi-rAb CoraLite® Plus 647-Goat Anti-Rabbit Recombinant Secondary Antibody (H+L) (RGAR005)(red), or 0.2 ug Rabbit IgG Isotype Control Recombinant Antibody (98136-1-RR, Clone: 240953C9) (blue). Cells were fixed with 4% PFA and permeabilized with Flow Cytometry Perm Buffer (PF00011-C). This data was developed using the same



Biolayer interferometry (BLI) kinetic assays of 84264-6-RR against Human GBP2 were performed. The affinity constant is below 1 pM.