

For Research Use Only

# GBP2 Recombinant antibody, PBS Only (Detector)

Catalog Number: 84264-7-PBS



## Basic Information

Catalog Number:

84264-7-PBS

Size:

1 mg/ml

Source:

Rabbit

Isotype:

IgG

Immunogen Catalog Number:

AG2425

GenBank Accession Number:

BC022272

GeneID (NCBI):

2634

UNIPROT ID:

P32456

Full Name:

guanylate binding protein 2,  
interferon-inducible

Calculated MW:

591 aa, 67 kDa

Purification Method:

Protein A purification

CloneNo.:

241580F10

## Applications

Tested Applications:

Sandwich ELISA, Indirect ELISA, Sample test

Species Specificity:

human

## Background Information

### Storage

Storage:

Store at -80°C.

**The product is shipped with ice packs. Upon receipt, store it immediately at -80°C**

Storage Buffer:

PBS Only

For technical support and original validation data for this product please contact:

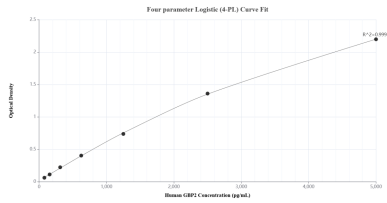
T: 4006900926

E: [Proteintech-CN@ptglab.com](mailto:Proteintech-CN@ptglab.com)

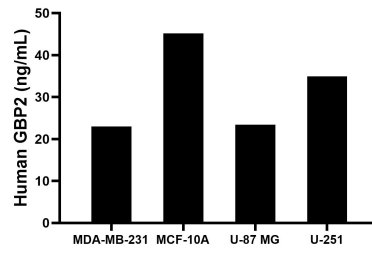
W: [ptgcn.com](http://ptgcn.com)

**This product is exclusively available under Proteintech Group brand and is not available to purchase from any other manufacturer.**

## Selected Validation Data



Sandwich ELISA standard curve of MP01177-4, Human GBP2 Recombinant Matched Antibody Pair - PBS only. 84264-3-PBS was coated to a plate as the capture antibody and incubated with serial dilutions of standard Ag2425. 84264-7-PBS was HRP conjugated as the detection antibody. Range: 78.1-5000 pg/mL



The mean GBP2 concentration was determined to be 23.0 ng/mL in MDA-MB-231 cell extract based on a 1.9 mg/mL extract load, 45.1 ng/mL in MCF-10A cell extract based on a 1.3 mg/mL extract load, 23.4 ng/mL in U-87 MG cell extract based on a 2.0 mg/mL extract load and 34.9 ng/mL in U-251 cell extract based on a 1.2 mg/mL extract load.