

For Research Use Only

CD22 Recombinant antibody, PBS Only

Catalog Number: 84265-5-PBS



Basic Information

Catalog Number: 84265-5-PBS	GenBank Accession Number: BC109306	Purification Method: Protein A purification
Size: 1 mg/ml	GeneID (NCBI): 933	CloneNo.: 241314B5
Source: Rabbit	UNIPROT ID: P20273	
Isotype: IgG	Full Name: CD22 molecule	
	Calculated MW: 847 aa, 95 kDa	
	Observed MW: 140 kDa	

Applications

Tested Applications:
WB, IHC, Indirect ELISA

Species Specificity:
human

Background Information

CD22, also known as Siglec-2 (sialic acid binding Ig-like lectin 2) or BL-CAM (B-lymphocyte cell adhesion molecule), is a 130-140 kDa, B-cell restricted, type I transmembrane glycoprotein belonging to the immunoglobulin gene superfamily. The expression of CD22 is developmentally regulated. It is expressed at low levels in the cytoplasm of pro-B and pre-B cells and present on the cell surface only at mature stages of B-cell differentiation. Cell surface expression is lost during terminal differentiation into plasma cell and after B-cell activation. CD22 is an inhibitory receptor for B-cell receptor (BCR) signalling, preferentially binds to alpha-2,6-linked sialic acid and mediates B-cell B-cell interactions. It plays a crucial role in activation and differentiation of the B-cell.

Storage

Storage:
Store at -80°C.
The product is shipped with ice packs. Upon receipt, store it immediately at -80°C

Storage Buffer:
PBS Only

For technical support and original validation data for this product please contact:

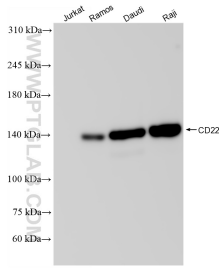
T: 4006900926

E: Proteintech-CN@ptglab.com

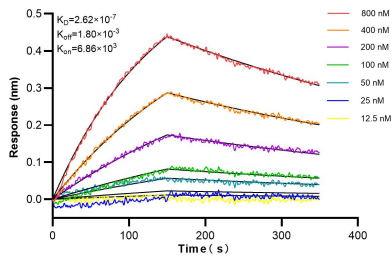
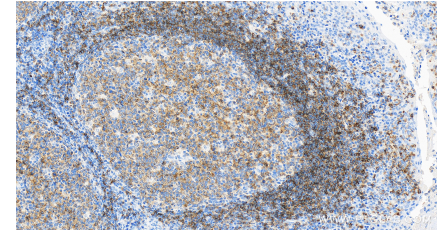
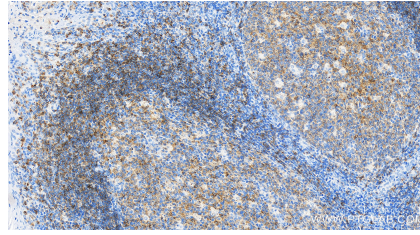
W: ptgcn.com

This product is exclusively available under Proteintech Group brand and is not available to purchase from any other manufacturer.

Selected Validation Data



Various lysates were subjected to SDS PAGE followed by western blot with 84265-5-RR (CD22 antibody) at dilution of 1:10000 incubated at room temperature for 1.5 hours. This data was developed using the same antibody clone with 84265-5-PBS in a different storage buffer formulation.



Biolayer interferometry (BLI) kinetic assays of 84265-5-RR against Human CD22 were performed. The affinity constant is 262 nM.