

For Research Use Only

IVNS1ABP Recombinant antibody, PBS Only (Detector)

Catalog Number:84268-1-PBS



Basic Information

Catalog Number:

84268-1-PBS

Size:

1 mg/ml

Source:

Rabbit

Isotype:

IgG

Immunogen Catalog Number:

AG6412

GenBank Accession Number:

BC067739

GeneID (NCBI):

10625

UNIPROT ID:

Q9Y6Y0

Full Name:

influenza virus NS1A binding protein

Calculated MW:

72 kDa

Observed MW:

70 kDa

Purification Method:

Protein A purification

CloneNo.:

241587B1

Applications

Tested Applications:

WB, IF/ICC, FC (Intra), Cytometric bead array, Indirect ELISA

Species Specificity:

human, mouse

Background Information

Storage

Storage:

Store at -80°C.

The product is shipped with ice packs. Upon receipt, store it immediately at -80°C

Storage Buffer:

PBS Only

For technical support and original validation data for this product please contact:

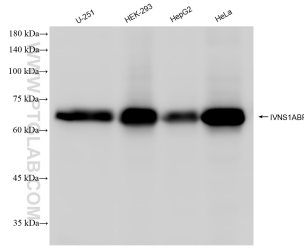
T: 4006900926

E: Proteintech-CN@ptglab.com

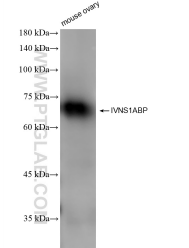
W: ptgcn.com

This product is exclusively available under Proteintech Group brand and is not available to purchase from any other manufacturer.

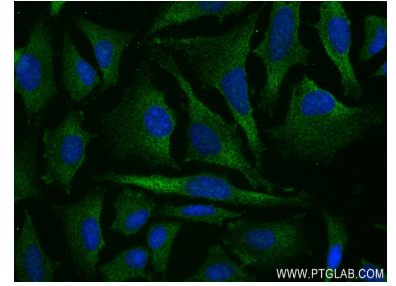
Selected Validation Data



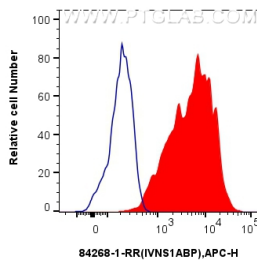
Various lysates were subjected to SDS PAGE followed by western blot with 84268-1-RR (IVNS1ABP antibody) at dilution of 1:5000 incubated at room temperature for 1.5 hours. This data was developed using the same antibody clone with 84268-1-PBS in a different storage buffer formulation.



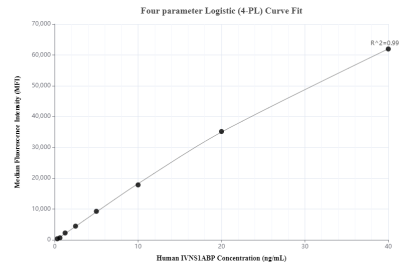
mouse ovary tissue was subjected to SDS PAGE followed by western blot with 84268-1-RR (IVNS1ABP antibody) at dilution of 1:5000 incubated at room temperature for 1.5 hours. This data was developed using the same antibody clone with 84268-1-PBS in a different storage buffer formulation.



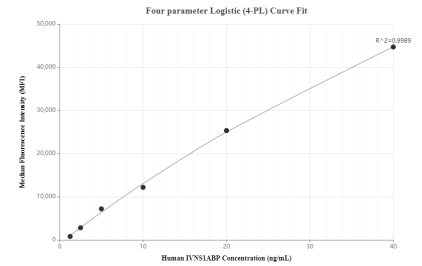
Immunofluorescent analysis of (-20°C Ethanol) fixed HeLa cells using IVNS1ABP antibody (84268-1-RR, Clone: 241587B1) at dilution of 1:250 and CoraLite®488-Conjugated Goat Anti-Rabbit IgG(H+L) (SA00013-2). This data was developed using the same antibody clone with 84268-1-PBS in a different storage buffer formulation.



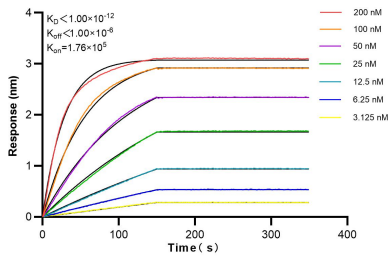
1×10^6 HeLa cells were intracellularly stained with 0.25 ug IVNS1ABP Recombinant antibody (84268-1-RR, Clone:241587B1) and APC-Conjugated Goat Anti-Rabbit IgG(H+L)(red), or 0.25 ug Isotype Control (blue). Cells were fixed with 4% PFA and permeabilized with Flow Cytometry Perm Buffer (PF00011-C). This data was developed using the same antibody clone with 84268-1-PBS in a different storage buffer formulation.



Cytometric bead array standard curve of MP01182-1, IVNS1ABP Recombinant Matched Antibody Pair, PBS Only. Capture antibody: 84268-4-PBS. Detection antibody: 84268-1-PBS. Standard: Ag6412. Range: 0.313-40 ng/mL.



Cytometric bead array standard curve of MP01182-2, IVNS1ABP Recombinant Matched Antibody Pair, PBS Only. Capture antibody: 84268-2-PBS. Detection antibody: 84268-1-PBS. Standard: Ag6412. Range: 1.25-40 ng/mL.



Biolayer interferometry (BLI) kinetic assays of 84268-1-RR against Human IVNS1ABP were performed. The affinity constant is below 1 pM.