

For Research Use Only

# CD72 Recombinant antibody, PBS Only (Capture/Detector)

Catalog Number: 84270-4-PBS



## Basic Information

<b>Catalog Number:</b> 84270-4-PBS	<b>GenBank Accession Number:</b> BC030227	<b>Purification Method:</b> Protein A purification
<b>Size:</b> 1 mg/ml	<b>GeneID (NCBI):</b> 971	<b>CloneNo.:</b> 241300G3
<b>Source:</b> Rabbit	<b>UNIPROT ID:</b> P21854	
<b>Isotype:</b> IgG	<b>Full Name:</b> CD72 molecule	
	<b>Calculated MW:</b> 359 aa, 40 kDa	

## Applications

**Tested Applications:**  
Cytometric bead array, Sandwich ELISA, Indirect ELISA,  
Sample test

**Species Specificity:**  
human

## Background Information

### Storage

**Storage:**  
Store at -80°C.  
**The product is shipped with ice packs. Upon receipt, store it immediately at -80°C**

**Storage Buffer:**  
PBS Only

For technical support and original validation data for this product please contact:

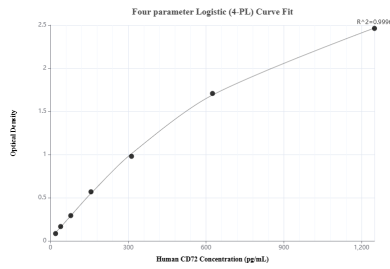
T: 4006900926

E: [Proteintech-CN@ptglab.com](mailto:Proteintech-CN@ptglab.com)

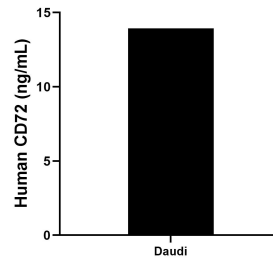
W: [ptgcn.com](http://ptgcn.com)

**This product is exclusively available under Proteintech Group brand and is not available to purchase from any other manufacturer.**

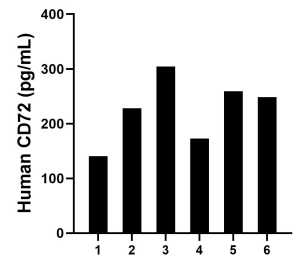
## Selected Validation Data



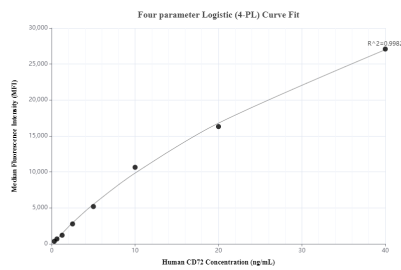
Sandwich ELISA standard curve of MP01170-2, Human CD72 Recombinant Matched Antibody Pair - PBS only. 84270-4-PBS was coated to a plate as the capture antibody and incubated with serial dilutions of standard RP02318. 84270-1-PBS was HRP conjugated as the detection antibody. Range: 19.5-1250 pg/mL



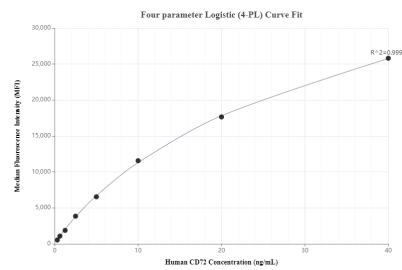
The mean CD72 concentration was determined to be 13.98 ng/mL in Daudi cell extract based on a 1.8 mg/mL extract load.



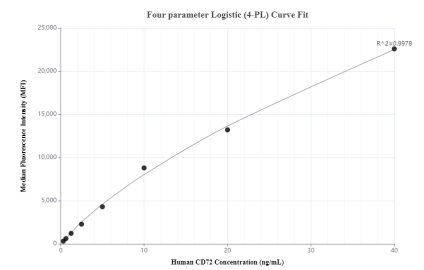
Serum of six individual healthy human donors was measured. The human CD72 concentration of detected samples was determined to be 225.64 pg/mL with a range of 140.7 - 304.5 pg/mL.



Cytometric bead array standard curve of MP01170-1, CD72 Recombinant Matched Antibody Pair, PBS Only. Capture antibody: 84270-2-PBS. Detection antibody: 84270-4-PBS. Standard: RP02318. Range: 0.313-40 ng/mL



Cytometric bead array standard curve of MP01170-2, CD72 Recombinant Matched Antibody Pair, PBS Only. Capture antibody: 84270-4-PBS. Detection antibody: 84270-1-PBS. Standard: RP02318. Range: 0.313-40 ng/mL



Cytometric bead array standard curve of MP01170-3, CD72 Recombinant Matched Antibody Pair, PBS Only. Capture antibody: 84270-3-PBS. Detection antibody: 84270-4-PBS. Standard: RP02318. Range: 0.313-40 ng/mL