

For Research Use Only

METTL1 Recombinant antibody, PBS Only (Capture)

Catalog Number:84272-3-PBS



Basic Information

Catalog Number: 84272-3-PBS	GenBank Accession Number: BC000550	Purification Method: Protein A purification
Size: 1 mg/ml	GeneID (NCBI): 4234	CloneNo.: 241108G4
Source: Rabbit	UNIPROT ID: Q9UBP6	
Isotype: IgG	Full Name: methyltransferase like 1	
Immunogen Catalog Number: AG7055	Calculated MW: 31 kDa	

Applications

Tested Applications:
Sandwich ELISA, Indirect ELISA, Sample test

Species Specificity:
human

Background Information

Storage

Storage:
Store at -80°C.
The product is shipped with ice packs. Upon receipt, store it immediately at -80°C

Storage Buffer:
PBS Only

For technical support and original validation data for this product please contact:

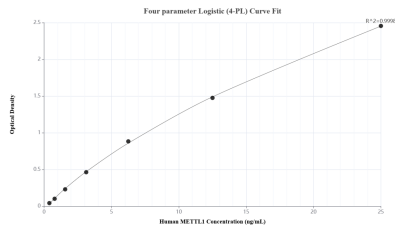
T: 4006900926

E: Proteintech-CN@ptglab.com

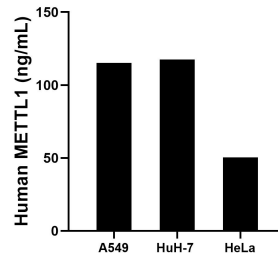
W: ptgcn.com

This product is exclusively available under Proteintech Group brand and is not available to purchase from any other manufacturer.

Selected Validation Data



Sandwich ELISA standard curve of MP01400-1, Human METTL1 Recombinant Matched Antibody Pair - PBS only. 84272-3-PBS was coated to a plate as the capture antibody and incubated with serial dilutions of standard Ag7055. 84272-2-PBS was HRP conjugated as the detection antibody. Range: 0.391-25 ng/mL.



The mean METTL1 concentration was determined to be 115.10 ng/mL in A549 cell extract based on a 2.50 mg/mL extract load, 117.58 ng/mL in Huh-7 cell extract based on a 1.40 mg/mL extract load and 50.30 ng/mL in HeLa cell extract based on a 1.20 mg/mL extract load.