

For Research Use Only

ZNF217 Recombinant antibody, PBS Only (Capture)

Catalog Number:84276-1-PBS



Basic Information

Catalog Number: 84276-1-PBS	GenBank Accession Number: BC113427	Purification Method: Protein A purification
Size: 1 mg/ml	GeneID (NCBI): 7764	CloneNo.: 241217E3
Source: Rabbit	UNIPROT ID: O75362	
Isotype: IgG	Full Name: zinc finger protein 217	
Immunogen Catalog Number: AG19453	Calculated MW: 1048 aa, 115 kDa	
	Observed MW: ~ 130 kDa	

Applications

Tested Applications:
WB, IF/ICC, Sandwich ELISA, Indirect ELISA, Sample test

Species Specificity:
human

Background Information

Zinc finger protein 217 (ZNF217) is a member of the Krüppel-like factor transcription factor family. ZNF217 possesses a characteristic structure of zinc finger motifs and plays a crucial role in regulating the biological activities of cells. ZNF217 binds to DNA through its zinc fingers thereby targeting potential protein binding partners to specific sites in the genome. Recent findings have revealed that ZNF217 is strongly associated with multiple aspects of cancer progression, impacting patient prognosis. PMID: 38259608

Storage

Storage:
Store at -80°C.
The product is shipped with ice packs. Upon receipt, store it immediately at -80°C

Storage Buffer:
PBS Only

For technical support and original validation data for this product please contact:

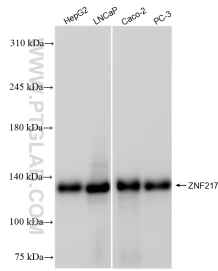
T: 4006900926

E: Proteintech-CN@ptglab.com

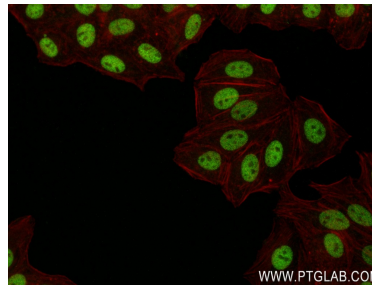
W: ptgcn.com

This product is exclusively available under Proteintech Group brand and is not available to purchase from any other manufacturer.

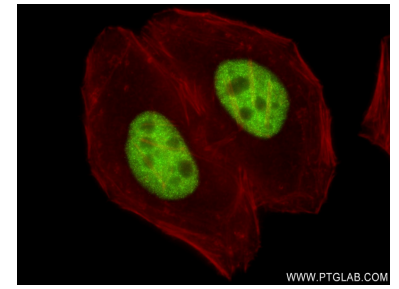
Selected Validation Data



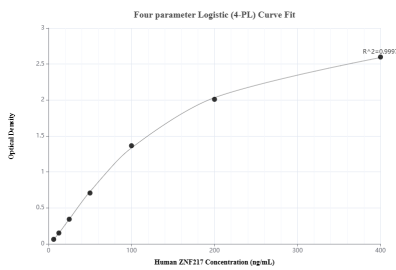
Various lysates were subjected to SDS PAGE followed by western blot with 84276-1-RR (ZNF217 antibody) at dilution of 1:2000 incubated at room temperature for 1.5 hours. This data was developed using the same antibody clone with 84276-1-PBS in a different storage buffer formulation.



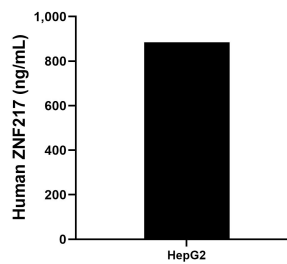
Immunofluorescent analysis of (4% PFA) fixed HepG2 cells using ZNF217 antibody (84276-1-RR, Clone: 241217E3) at dilution of 1:250 and CoraLite®488-Conjugated AffiniPure Goat Anti-Rabbit IgG(H+L) (SA00013-2), CL594-Phalloidin (red). This data was developed using the same antibody clone with 84276-1-PBS in a different storage buffer formulation.



Immunofluorescent analysis of (4% PFA) fixed HepG2 cells using ZNF217 antibody (84276-1-RR, Clone: 241217E3) at dilution of 1:250 and CoraLite®488-Conjugated AffiniPure Goat Anti-Rabbit IgG(H+L) (SA00013-2), CL594-Phalloidin (red). This data was developed using the same antibody clone with 84276-1-PBS in a different storage buffer formulation.



Sandwich ELISA standard curve of MP01357-1, Human ZNF217 Recombinant Matched Antibody Pair - PBS only. 84276-1-PBS was coated to a plate as the capture antibody and incubated with serial dilutions of standard Ag19453. 84276-2-PBS was HRP conjugated as the detection antibody. Range: 6.25-400 ng/mL



The mean ZNF217 concentration was determined to be 885 ng/mL in HepG2 cell extract based on a 1.3 mg/mL extract load.