

For Research Use Only

# CPS1 Recombinant antibody

Catalog Number: 84277-1-RR



## Basic Information

Catalog Number:

84277-1-RR

Size:

250 µg/ml

Source:

Rabbit

Isotype:

IgG

GenBank Accession Number:

BC140943

GeneID (NCBI):

1373

UNIPROT ID:

P31327

Full Name:

carbamoyl-phosphate synthetase 1, mitochondrial

Calculated MW:

165 kDa

Observed MW:

140-165 kDa

Purification Method:

Protein A purification

CloneNo.:

241198F1

Recommended Dilutions:

WB 1:500-1:2000

IF/ICC 1:50-1:500

## Applications

Tested Applications:

WB, IF/ICC, ELISA

Species Specificity:

human, mouse, rat

Positive Controls:

WB : HeLa cells, mouse liver tissue, rat liver tissue

IF/ICC : HepG2 cells,

## Background Information

Carbamoyl phosphate synthetase 1 (CPS1) is the first rate-limiting enzyme in the urea cycle, converting ammonium into carbamoyl phosphate, and plays an intricate role in arginine metabolism and pyrimidine metabolism (PMID: 28376202). CPS1 expression is liver specific and suppressed in HCC cells and tumor tissues at the transcriptional level (PMID: 21281797). CPS1 gene comprises 38 exons that encode a polypeptide of 1500 amino acids and has a molecular weight of 165 kDa.

## Storage

Storage:

Store at -20°C. Stable for one year after shipment.

Storage Buffer:

PBS with 0.02% sodium azide and 50% glycerol pH 7.3.

Aliquoting is unnecessary for -20°C storage

For technical support and original validation data for this product please contact:

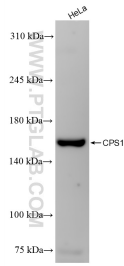
T: 4006900926

E: [Proteintech-CN@ptglab.com](mailto:Proteintech-CN@ptglab.com)

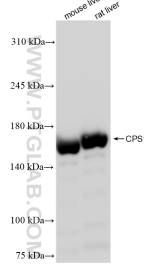
W: [ptgcn.com](http://ptgcn.com)

This product is exclusively available under Proteintech Group brand and is not available to purchase from any other manufacturer.

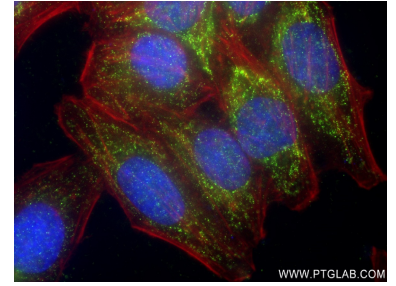
## Selected Validation Data



HeLa cells were subjected to SDS PAGE followed by western blot with 84277-1-RR (CPS1 antibody) at dilution of 1:1000 incubated at room temperature for 1.5 hours.



Various lysates were subjected to SDS PAGE followed by western blot with 84277-1-RR (CPS1 antibody) at dilution of 1:1000 incubated at room temperature for 1.5 hours.



Immunofluorescent analysis of (4% PFA) fixed HepG2 cells using CPS1 antibody (84277-1-RR, Clone: 241198F1) at dilution of 1:100 and CoraLite®488-Conjugated AffiniPure Goat Anti-Rabbit IgG(H+L) (SA00013-2), CL594-Phalloidin (red).