

For Research Use Only

# NME3 Recombinant antibody, PBS Only (Capture)

Catalog Number: 84278-5-PBS



## Basic Information

<b>Catalog Number:</b> 84278-5-PBS	<b>GenBank Accession Number:</b> BC000250	<b>Purification Method:</b> Protein A purification
<b>Size:</b> 1 mg/ml	<b>GeneID (NCBI):</b> 4832	<b>CloneNo.:</b> 241585H7
<b>Source:</b> Rabbit	<b>UNIPROT ID:</b> Q13232	
<b>Isotype:</b> IgG	<b>Full Name:</b> non-metastatic cells 3, protein expressed in	
<b>Immunogen Catalog Number:</b> AG7284	<b>Calculated MW:</b> 19 kDa	
	<b>Observed MW:</b> 18 kDa	

## Applications

**Tested Applications:**  
WB, IHC, IF/ICC, Cytometric bead array, Indirect ELISA

**Species Specificity:**  
human, rat

## Background Information

NME3 (NME/NM23 Nucleoside Diphosphate Kinase 3), also named as NM23-H3; DR-NM23, is a member of the nucleoside diphosphate kinase (NDPK) family that binds to the mitochondrial outer membrane to stimulate mitochondrial fusion. The depletion of NME3 will cause dysfunction in mitochondrial dynamics. NME3 has been found to facilitate DNA-repair mechanisms binds to several NPHPs, including NEK8, CEP164, and ankyrin repeat and sterile  $\alpha$  motif domain-containing 6 (ANKS6)

## Storage

**Storage:**  
Store at  $-80^{\circ}\text{C}$ .  
**The product is shipped with ice packs. Upon receipt, store it immediately at  $-80^{\circ}\text{C}$**

**Storage Buffer:**  
PBS Only

For technical support and original validation data for this product please contact:

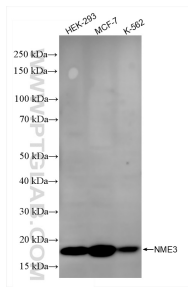
T: 4006900926

E: [Proteintech-CN@ptglab.com](mailto:Proteintech-CN@ptglab.com)

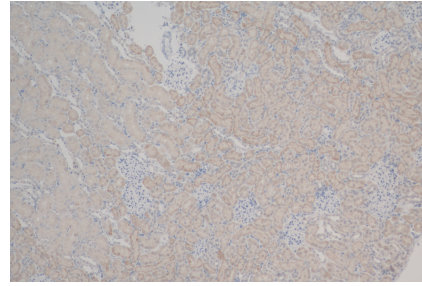
W: [ptgcn.com](http://ptgcn.com)

**This product is exclusively available under Proteintech Group brand and is not available to purchase from any other manufacturer.**

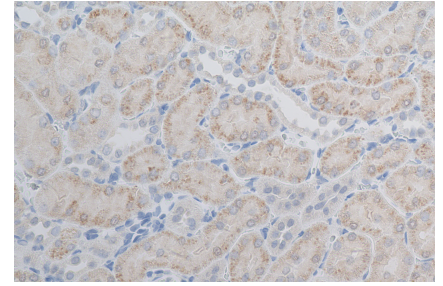
## Selected Validation Data



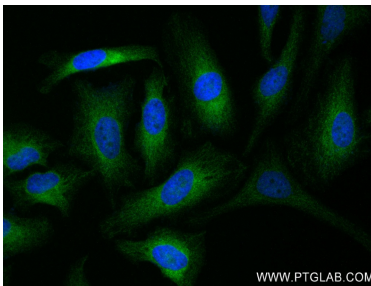
Various lysates were subjected to SDS PAGE followed by western blot with 84278-5-RR (NME3 antibody) at dilution of 1:10000 incubated at room temperature for 1.5 hours. This data was developed using the same antibody clone with 84278-5-PBS in a different storage buffer formulation.



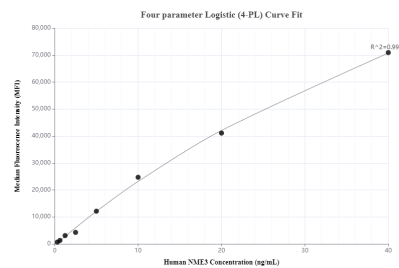
Immunohistochemical analysis of paraffin-embedded rat kidney tissue slide using 84278-5-RR (NME3 antibody) at dilution of 1:200 (under 10x lens). Heat mediated antigen retrieval with Tris-EDTA buffer (pH 9.0). This data was developed using the same antibody clone with 84278-5-PBS in a different storage buffer formulation.



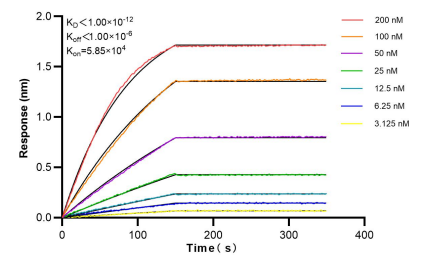
Immunohistochemical analysis of paraffin-embedded rat kidney tissue slide using 84278-5-RR (NME3 antibody) at dilution of 1:200 (under 40x lens). Heat mediated antigen retrieval with Tris-EDTA buffer (pH 9.0). This data was developed using the same antibody clone with 84278-5-PBS in a different storage buffer formulation.



Immunofluorescent analysis of (4% PFA) fixed HeLa cells using NME3 antibody (84278-5-RR, Clone: 241585H7) at dilution of 1:250 and CoraLite@488-Conjugated Goat Anti-Rabbit IgG(H+L) (SA00013-2). This data was developed using the same antibody clone with 84278-5-PBS in a different storage buffer formulation.



Cytometric bead array standard curve of MP01200-2, NME3 Recombinant Matched Antibody Pair, PBS Only. Capture antibody: 84278-5-PBS. Detection antibody: 84278-1-PBS. Standard: Ag7284. Range: 0.313-40 ng/mL.



Bi-layer interferometry (BLI) kinetic assays of 84278-5-RR against Human NME3 were performed. The affinity constant is below 1 pM.