

For Research Use Only

PFKM Recombinant antibody, PBS Only (Detector)

Catalog Number: 84281-5-PBS



Basic Information

Catalog Number: 84281-5-PBS	GenBank Accession Number: BC021203	Purification Method: Protein A purification
Size: 1 mg/ml	GeneID (NCBI): 5213	CloneNo.: 241598B2
Source: Rabbit	UNIPROT ID: P08237	
Isotype: IgG	Full Name: phosphofructokinase, muscle	
Immunogen Catalog Number: AG30840	Observed MW: 75-85 kDa	

Applications

Tested Applications:
WB, IHC, IF/ICC, Cytometric bead array, Indirect ELISA

Species Specificity:
human, mouse

Background Information

PFKM, also named as GSD7, PFK-1, PFK-M and PFKX, belongs to the phosphofructokinase family and two domains subfamily. PFKM catalyzes the reaction: ATP + D-fructose 6-phosphate = ADP + D-fructose 1,6-bisphosphate. It is a key regulatory enzyme in glycolysis. Defects in PFKM cause glycogen storage disease type 7 (GSD7). PFKM has three isoforms with molecular weights of 85, 82, and 93 kDa.

Storage

Storage:
Store at -80°C.
The product is shipped with ice packs. Upon receipt, store it immediately at -80°C

Storage Buffer:
PBS Only

For technical support and original validation data for this product please contact:

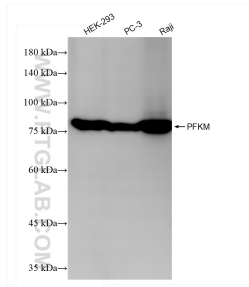
T: 4006900926

E: Proteintech-CN@ptglab.com

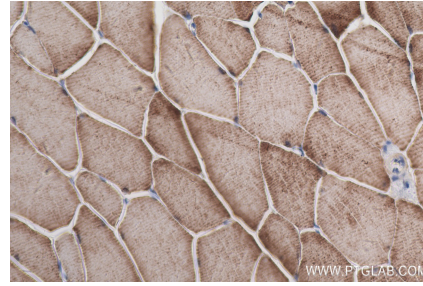
W: ptgcn.com

This product is exclusively available under Proteintech Group brand and is not available to purchase from any other manufacturer.

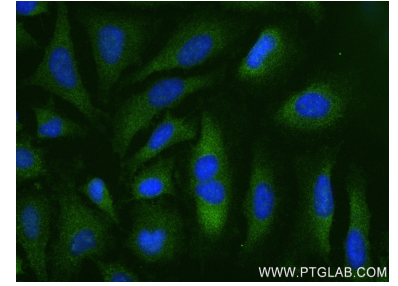
Selected Validation Data



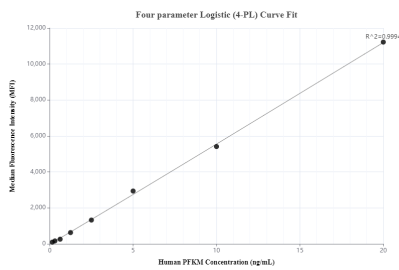
Various lysates were subjected to SDS PAGE followed by western blot with 84281-5-RR (PFKM antibody) at dilution of 1:10000 incubated at room temperature for 1.5 hours. This data was developed using the same antibody clone with 84281-5-PBS in a different storage buffer formulation.



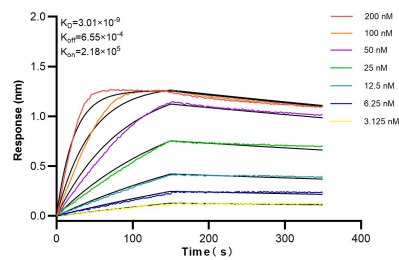
Immunohistochemical analysis of paraffin-embedded mouse skeletal muscle tissue slide using 84281-5-RR (PFKM antibody) at dilution of 1:600 (under 40x lens). Heat mediated antigen retrieval with Tris-EDTA buffer (pH 9.0). This data was developed using the same antibody clone with 84281-5-PBS in a different storage buffer formulation.



Immunofluorescent analysis of (-20°C Ethanol) fixed HeLa cells using PFKM antibody (84281-5-RR, Clone: 241598B2) at dilution of 1:250 and CoraLite®488-Conjugated Goat Anti-Rabbit IgG(H+L) (SA00013-2). This data was developed using the same antibody clone with 84281-5-PBS in a different storage buffer formulation.



Cytometric bead array standard curve of MP01204-3, PFKM Recombinant Matched Antibody Pair, PBS Only. Capture antibody: 84281-4-PBS. Detection antibody: 84281-5-PBS. Standard: Ag30840. Range: 0.156-20 ng/mL



Biolayer interferometry (BLI) kinetic assays of 84281-5-RR against Human PFKM were performed. The affinity constant is 3.01 nM.