

For Research Use Only

MLPH Recombinant antibody, PBS Only

Catalog Number: 84282-1-PBS



Basic Information

Catalog Number: 84282-1-PBS	GenBank Accession Number: BC001653	Purification Method: Protein A purification
Size: 1 mg/ml	GeneID (NCBI): 79083	CloneNo.: 241621G4
Source: Rabbit	UNIPROT ID: Q9BV36	
Isotype: IgG	Full Name: melanophilin	
Immunogen Catalog Number: AG32931	Calculated MW: 66 kDa	
	Observed MW: 66 kDa, 80 kDa	

Applications

Tested Applications:
WB, IHC, Indirect ELISA

Species Specificity:
human

Background Information

Melanophilin (Mlph) is a member of the exophilin subfamily of Rab effector proteins. MLPH is a modular protein, forming a ternary complex with the small Ras-related GTPase Rab27A in its GTP-bound form and the motor protein myosin Va. It regulates retention of melanosomes at the peripheral actin cytoskeleton of melanocytes, a process essential for normal mammalian pigmentation. Defects in MLPH are a cause of Griscelli syndrome type 3 (GS3), which is characterized by a silver-gray hair color and abnormal pigment distribution in the hair shaft.

Storage

Storage:
Store at -80°C.
The product is shipped with ice packs. Upon receipt, store it immediately at -80°C

Storage Buffer:
PBS Only

For technical support and original validation data for this product please contact:

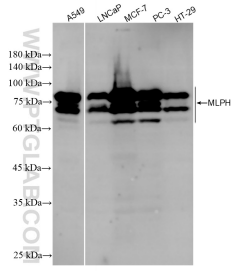
T: 4006900926

E: Proteintech-CN@ptglab.com

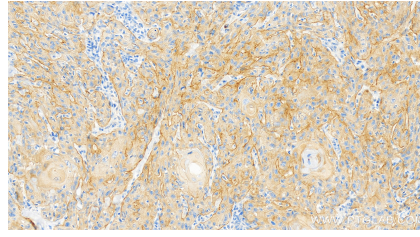
W: ptgcn.com

This product is exclusively available under Proteintech Group brand and is not available to purchase from any other manufacturer.

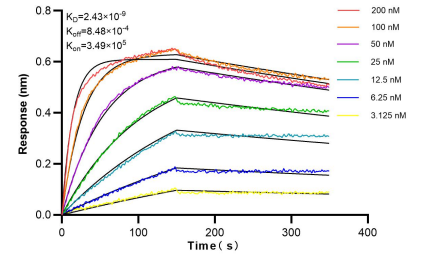
Selected Validation Data



Various lysates were subjected to SDS PAGE followed by western blot with 84282-1-RR (MLPH antibody) at dilution of 1:5000 incubated at room temperature for 1.5 hours. This data was developed using the same antibody clone with 84282-1-PBS in a different storage buffer formulation.



Immunohistochemical analysis of paraffin-embedded human skin cancer tissue slide using 84282-1-RR (MLPH antibody) at dilution of 1:400 (under 40x lens). Heat mediated antigen retrieval with Tris-EDTA buffer (pH 9.0). This data was developed using the same antibody clone with 84282-1-PBS in a different storage buffer formulation.



Bi-layer interferometry (BLI) kinetic assays of 84282-1-RR against Human MLPH were performed. The affinity constant is 2.43 nM.