

For Research Use Only

# TMEM98 Recombinant antibody, PBS Only (Detector)

Catalog Number: 84284-4-PBS



## Basic Information

|  |   |   |
|--|---|---|
| <b>Catalog Number:</b><br>84284-4-PBS      | <b>GenBank Accession Number:</b><br>BC000526  | <b>Purification Method:</b><br>Protein A purification |
| <b>Size:</b><br>1 mg/ml                    | <b>GeneID (NCBI):</b><br>26022                | <b>CloneNo.:</b><br>241581G11                         |
| <b>Source:</b><br>Rabbit                   | <b>UNIPROT ID:</b><br>Q9Y2Y6                  |   |
| <b>Isotype:</b><br>IgG                     | <b>Full Name:</b><br>transmembrane protein 98 |   |
| <b>Immunogen Catalog Number:</b><br>AG6492 | <b>Calculated MW:</b><br>25 kDa               |   |

## Applications

**Tested Applications:**  
IF/ICC, Cytometric bead array, Indirect ELISA

**Species Specificity:**  
human

## Background Information

TMEM98, also named as TADA1, composed of 226 amino acid residues, is a potential single-pass transmembrane protein. It is expression in both nucleus and cytoplasm. TMEM98 was found to be over-expressed in most of the hepatocellular carcinoma tissue. MEM98 is not only a prognostic marker for patients with hepatocellular carcinoma but also a novel molecular target associated with intrinsic and acquired chemoresistance of hepatocellular carcinoma (PMID: 24608572).

## Storage

**Storage:**  
Store at -80°C.  
**The product is shipped with ice packs. Upon receipt, store it immediately at -80°C**

**Storage Buffer:**  
PBS Only

For technical support and original validation data for this product please contact:

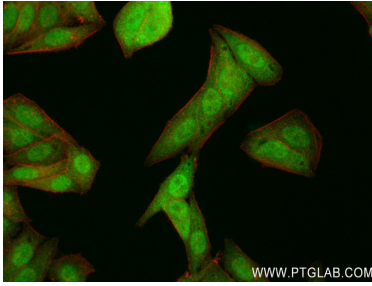
T: 4006900926

E: [Proteintech-CN@ptglab.com](mailto:Proteintech-CN@ptglab.com)

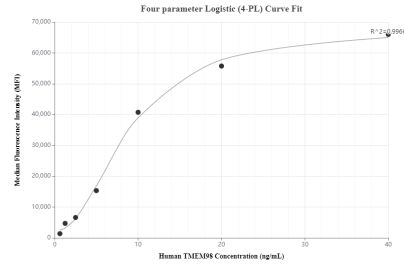
W: [ptgcn.com](http://ptgcn.com)

**This product is exclusively available under Proteintech Group brand and is not available to purchase from any other manufacturer.**

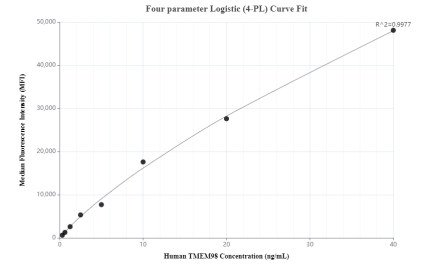
## Selected Validation Data



Immunofluorescent analysis of (4% PFA) fixed HepG2 cells using TMEM98 antibody (84284-4-RR, Clone: 241581G11) at dilution of 1:250 and CoraLite®488-Conjugated Goat Anti-Rabbit IgG(H+L) (SA00013-2), CL594-Phalloidin (red). This data was developed using the same antibody clone with 84284-4-PBS in a different storage buffer formulation.



Cytometric bead array standard curve of MP01195-1, TMEM98 Recombinant Matched Antibody Pair, PBS Only. Capture antibody: 84284-1-PBS. Detection antibody: 84284-4-PBS. Standard: Ag6492. Range: 0.313-40 ng/mL.



Cytometric bead array standard curve of MP01195-3, TMEM98 Recombinant Matched Antibody Pair, PBS Only. Capture antibody: 84284-2-PBS. Detection antibody: 84284-4-PBS. Standard: Ag6492. Range: 0.313-40 ng/mL.



Biolayer interferometry (BLI) kinetic assays of 84284-4-RR against Human TMEM98 were performed. The affinity constant is 0.974 nM.