

For Research Use Only

# REG Recombinant antibody, PBS Only

Catalog Number: 84287-3-PBS



## Basic Information

<b>Catalog Number:</b> 84287-3-PBS	<b>GenBank Accession Number:</b> BC005350	<b>Purification Method:</b> Protein A purification
<b>Size:</b> 1 mg/ml	<b>GeneID (NCBI):</b> 5967	<b>CloneNo.:</b> 241617H2
<b>Source:</b> Rabbit	<b>UNIPROT ID:</b> P05451	
<b>Isotype:</b> IgG	<b>Full Name:</b> regenerating islet-derived 1 alpha	
<b>Immunogen Catalog Number:</b> AG8640	<b>Calculated MW:</b> 166 aa, 19 kDa	
	<b>Observed MW:</b> 16 kDa	

## Applications

**Tested Applications:**  
WB, Indirect ELISA

**Species Specificity:**  
human, mouse, rat

## Background Information

The Reg gene family is a multigene family grouped into four subclasses, types I, II, III and IV, based on the primary structures of the encoded proteins. This gene encodes a protein that is secreted by the exocrine pancreas. It is associated with islet cell regeneration and diabetogenesis and may be involved in pancreatic lithogenesis. It's reported that REG1A was significantly upregulated in tumor specimens and adenoma as compared to normal colorectal tissue. (PMID: 34698109)

## Storage

**Storage:**  
Store at -80°C.  
**The product is shipped with ice packs. Upon receipt, store it immediately at -80°C**

**Storage Buffer:**  
PBS Only

For technical support and original validation data for this product please contact:

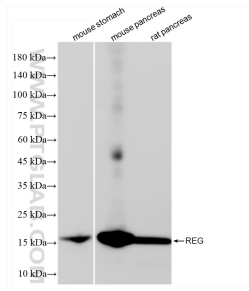
T: 4006900926

E: [Proteintech-CN@ptglab.com](mailto:Proteintech-CN@ptglab.com)

W: [ptgcn.com](http://ptgcn.com)

**This product is exclusively available under Proteintech Group brand and is not available to purchase from any other manufacturer.**

## Selected Validation Data



mouse stomach tissue, mouse pancreas tissue, rat pancreas tissue. This data was developed using the same antibody clone with 84287-3-PBS in a different storage buffer formulation.