

For Research Use Only

REG Recombinant antibody

Catalog Number: 84287-3-RR



Basic Information

Catalog Number: 84287-3-RR	GenBank Accession Number: BC005350	Purification Method: Protein A purification
Size: 1000 µg/ml	GeneID (NCBI): 5967	CloneNo.: 241617H2
Source: Rabbit	UNIPROT ID: P05451	Recommended Dilutions: WB 1:5000-1:50000
Isotype: IgG	Full Name: regenerating islet-derived 1 alpha	
Immunogen Catalog Number: AG8640	Calculated MW: 166 aa, 19 kDa	
	Observed MW: 16 kDa	

Applications

Tested Applications: WB, ELISA	Positive Controls: WB : mouse stomach tissue,
Species Specificity: human, mouse, rat	

Background Information

The Reg gene family is a multigene family grouped into four subclasses, types I, II, III and IV, based on the primary structures of the encoded proteins. This gene encodes a protein that is secreted by the exocrine pancreas. It is associated with islet cell regeneration and diabetogenesis and may be involved in pancreatic lithogenesis. It's reported that REG1A was significantly upregulated in tumor specimens and adenoma as compared to normal colorectal tissue. (PMID: 34698109)

Storage

Storage:
Store at -20°C. Stable for one year after shipment.
Storage Buffer:
PBS with 0.02% sodium azide and 50% glycerol pH 7.3.
Aliquoting is unnecessary for -20°C storage

For technical support and original validation data for this product please contact:

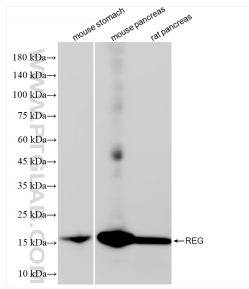
T: 4006900926

E: Proteintech-CN@ptglab.com

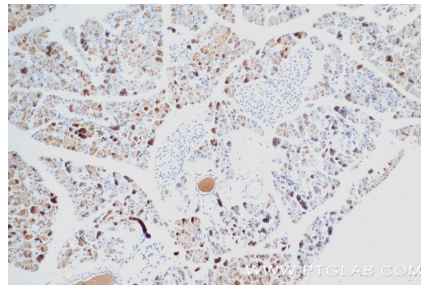
W: ptgcn.com

This product is exclusively available under Proteintech Group brand and is not available to purchase from any other manufacturer.

Selected Validation Data



mouse stomach tissue, mouse pancreas tissue, rat pancreas tissue,



Immunohistochemical analysis of paraffin-embedded mouse pancreas tissue slide using 84287-3-RR (REG antibody) at dilution of 1:400 (under 10x lens). Heat mediated antigen retrieval with Tris-EDTA buffer (pH 9.0).