

For Research Use Only

# ADAM17 Recombinant antibody, PBS Only (Detector)

Catalog Number:84292-4-PBS



## Basic Information

<b>Catalog Number:</b> 84292-4-PBS	<b>GenBank Accession Number:</b> BC136783	<b>Purification Method:</b> Protein A purification
<b>Size:</b> 1 mg/ml	<b>GeneID (NCBI):</b> 6868	<b>CloneNo.:</b> 241305A2
<b>Source:</b> Rabbit	<b>UNIPROT ID:</b> P78536	
<b>Isotype:</b> IgG	<b>Full Name:</b> ADAM metallopeptidase domain 17	
<b>Immunogen Catalog Number:</b> AG32418	<b>Calculated MW:</b> 824 aa, 93 kDa	

## Applications

**Tested Applications:**  
WB, Sandwich ELISA, Indirect ELISA, Sample test

**Species Specificity:**  
human, mouse

## Background Information

The ADAMs (A Disintegrin And Metalloprotease) are multidomain transmembrane proteins. One of the first ADAMs implicated in membrane shedding is ADAM-17, which is shown to release the active form of tumor necrosis factor (TNF)- $\alpha$  from its precursor (PMID:18238782). ADAM17 is also named as CSVP, TACE. The full length protein has 9 glycosylation sites, a signal peptide, propeptide and 2 isoforms produced by alternative splicing. The 120-kDa form of ADAM-17 is expressed more frequently and at higher levels in primary breast carcinomas compared with normal breast tissue (PMID:17438092).

## Storage

**Storage:**  
Store at -80°C.  
**The product is shipped with ice packs. Upon receipt, store it immediately at -80°C**

**Storage Buffer:**  
PBS Only

For technical support and original validation data for this product please contact:

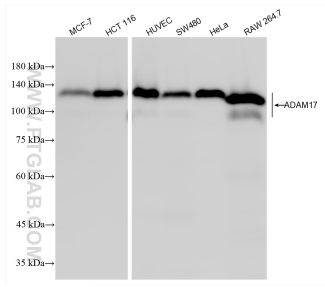
T: 4006900926

E: [Proteintech-CN@ptglab.com](mailto:Proteintech-CN@ptglab.com)

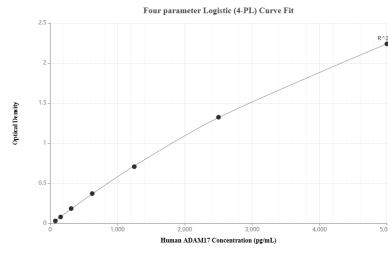
W: [ptgcn.com](http://ptgcn.com)

**This product is exclusively available under Proteintech Group brand and is not available to purchase from any other manufacturer.**

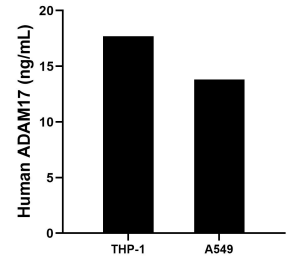
## Selected Validation Data



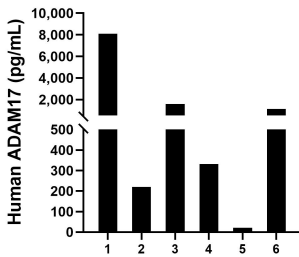
Various lysates were subjected to SDS PAGE followed by western blot with 84292-4-RR (ADAM17 antibody) at dilution of 1:5000 incubated at room temperature for 1.5 hours. This data was developed using the same antibody clone with 84292-4-PBS in a different storage buffer formulation.



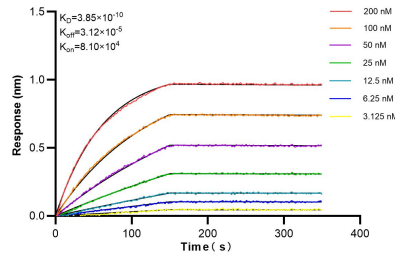
Sandwich ELISA standard curve of MP01169-3, Human ADAM17 Recombinant Matched Antibody Pair - PBS only. 84292-3-PBS was coated to a plate as the capture antibody and incubated with serial dilutions of standard Ag32418. 84292-4-PBS was HRP conjugated as the detection antibody. Range: 78.1-5000 pg/mL



The mean ADAM17 concentration was determined to be 18.51 ng/mL in THP-1 cell extract based on a 4.4 mg/mL extract load and 13.76 ng/mL in A549 cell extract based on a 2.7 mg/mL extract load.



Serum of six individual healthy human donors was measured. The human ADAM17 concentration of detected samples was determined to be 1,898.9 pg/mL with a range of 21.5 - 8,096.2 ng/mL.



Biolayer interferometry (BLI) kinetic assays of 84292-4-RR against Human ADAM17 were performed. The affinity constant is 0.385 nM.