

For Research Use Only

ARFGEF2 Recombinant antibody, PBS Only (Detector)

Catalog Number: 84296-4-PBS



Basic Information

Catalog Number: 84296-4-PBS	GenBank Accession Number: BC050449	Purification Method: Protein A purification
Size: 1 mg/ml	GeneID (NCBI): 10564	CloneNo.: 241538H5
Source: Rabbit	UNIPROT ID: Q9Y6D5	
Isotype: IgG	Full Name: ADP-ribosylation factor guanine nucleotide-exchange factor 2 (brefeldin A-inhibited)	
Immunogen Catalog Number: AG35396	Observed MW: 202 kDa	

Applications

Tested Applications:
WB, IHC, Cytometric bead array, Indirect ELISA

Species Specificity:
human

Background Information

ADP-ribosylation factors (ARFs) play an important role in intracellular vesicular trafficking. ARFGEF2 is involved in the activation of ARFs by accelerating replacement of bound GDP with GTP and is involved in Golgi transport. ARFGEF2 contains a Sec7 domain, which may be responsible for its guanine-nucleotide exchange activity and also brefeldin A inhibition.

Storage

Storage:
Store at -80°C.
The product is shipped with ice packs. Upon receipt, store it immediately at -80°C

Storage Buffer:
PBS Only

For technical support and original validation data for this product please contact:

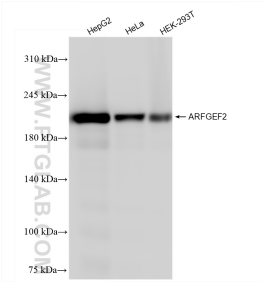
T: 4006900926

E: Proteintech-CN@ptglab.com

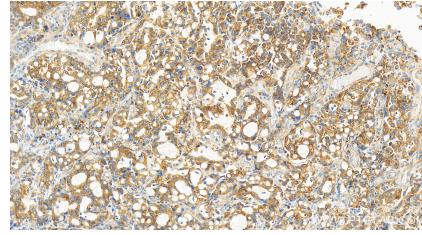
W: ptgcn.com

This product is exclusively available under Proteintech Group brand and is not available to purchase from any other manufacturer.

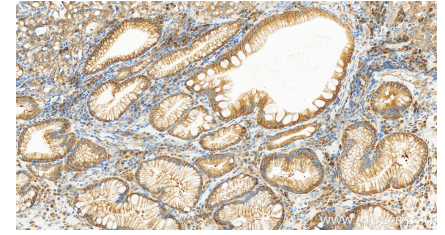
Selected Validation Data



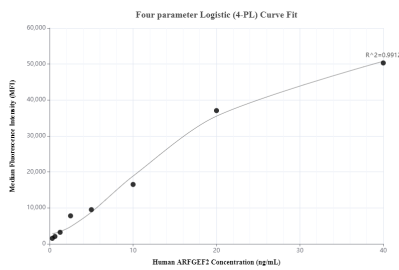
Various lysates were subjected to SDS PAGE followed by western blot with 84296-4-RR (ARFGEF2 antibody) at dilution of 1:10000 incubated at room temperature for 1.5 hours. This data was developed using the same antibody clone with 84296-4-PBS in a different storage buffer formulation.



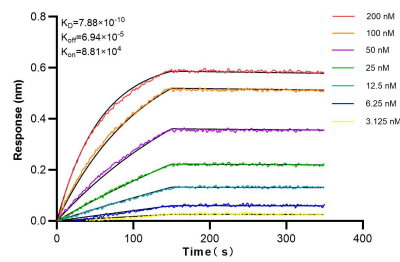
Immunohistochemical analysis of paraffin-embedded human stomach cancer tissue slide using 84296-4-RR (ARFGEF2 antibody) at dilution of 1:400 (under 40x lens). Heat mediated antigen retrieval with Tris-EDTA buffer (pH 9.0). This data was developed using the same antibody clone with 84296-4-PBS in a different storage buffer formulation.



Immunohistochemical analysis of paraffin-embedded human stomach cancer tissue slide using 84296-4-RR (ARFGEF2 antibody) at dilution of 1:400 (under 40x lens). Heat mediated antigen retrieval with Tris-EDTA buffer (pH 9.0). This data was developed using the same antibody clone with 84296-4-PBS in a different storage buffer formulation.



Cytometric bead array standard curve of MP01199-3, ARFGEF2 Recombinant Matched Antibody Pair, PBS Only. Capture antibody: 84296-5-PBS. Detection antibody: 84296-4-PBS. Standard: Ag35396. Range: 0.313-40 ng/mL.



Biolayer interferometry (BLI) kinetic assays of 84296-4-RR against Human ARFGEF2 were performed. The affinity constant is 0.788 nM.