

For Research Use Only

ARFGEF2 Recombinant antibody

Catalog Number: 84296-4-RR



Basic Information

Catalog Number: 84296-4-RR	GenBank Accession Number: BC050449	Purification Method: Protein A purification
Size: 900 µg/ml	GeneID (NCBI): 10564	CloneNo.: 241538H5
Source: Rabbit	UNIPROT ID: Q9Y6D5	Recommended Dilutions: WB 1:5000-1:50000 IHC 1:200-1:800
Isotype: IgG	Full Name: ADP-ribosylation factor guanine nucleotide-exchange factor 2 (brefeldin A-inhibited)	
Immunogen Catalog Number: AG35396	Observed MW: 202 kDa	

Applications

Tested Applications: WB, IHC, ELISA	Positive Controls:
Species Specificity: human	WB : HepG2 cells, HeLa cells, HEK-293T cells
	IHC : human stomach cancer tissue,

Note-IHC: suggested antigen retrieval with *TE buffer pH 9.0*; (*) Alternatively, antigen retrieval may be performed with *citrate buffer pH 6.0*

Background Information

ADP-ribosylation factors (ARFs) play an important role in intracellular vesicular trafficking. ARFGEF2 is involved in the activation of ARFs by accelerating replacement of bound GDP with GTP and is involved in Golgi transport. ARFGEF2 contains a Sec7 domain, which may be responsible for its guanine-nucleotide exchange activity and also brefeldin A inhibition.

Storage

Storage:
Store at -20°C. Stable for one year after shipment.
Storage Buffer:
PBS with 0.02% sodium azide and 50% glycerol pH 7.3.
Aliquoting is unnecessary for -20°C storage

For technical support and original validation data for this product please contact:

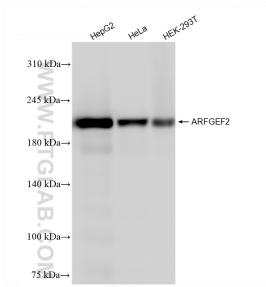
T: 4006900926

E: Proteintech-CN@ptglab.com

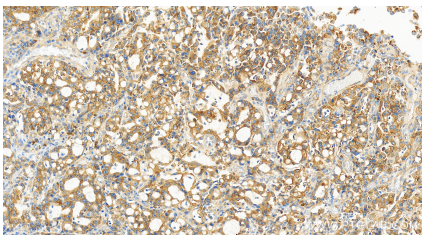
W: ptgcn.com

This product is exclusively available under Proteintech Group brand and is not available to purchase from any other manufacturer.

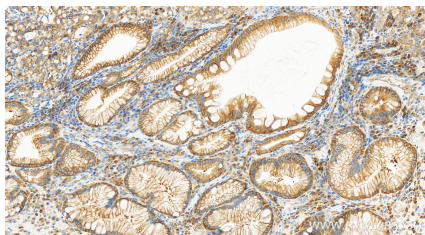
Selected Validation Data



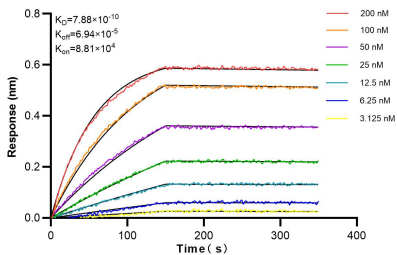
Various lysates were subjected to SDS PAGE followed by western blot with 84296-4-RR (ARFGEF2 antibody) at dilution of 1:10000 incubated at room temperature for 1.5 hours.



Immunohistochemical analysis of paraffin-embedded human stomach cancer tissue slide using 84296-4-RR (ARFGEF2 antibody) at dilution of 1:400 (under 40x lens). Heat mediated antigen retrieval with Tris-EDTA buffer (pH 9.0).



Immunohistochemical analysis of paraffin-embedded human stomach cancer tissue slide using 84296-4-RR (ARFGEF2 antibody) at dilution of 1:400 (under 40x lens). Heat mediated antigen retrieval with Tris-EDTA buffer (pH 9.0).



Biolayer interferometry (BLI) kinetic assays of 84296-4-RR against Human ARFGEF2 were performed. The affinity constant is 0.788 nM.